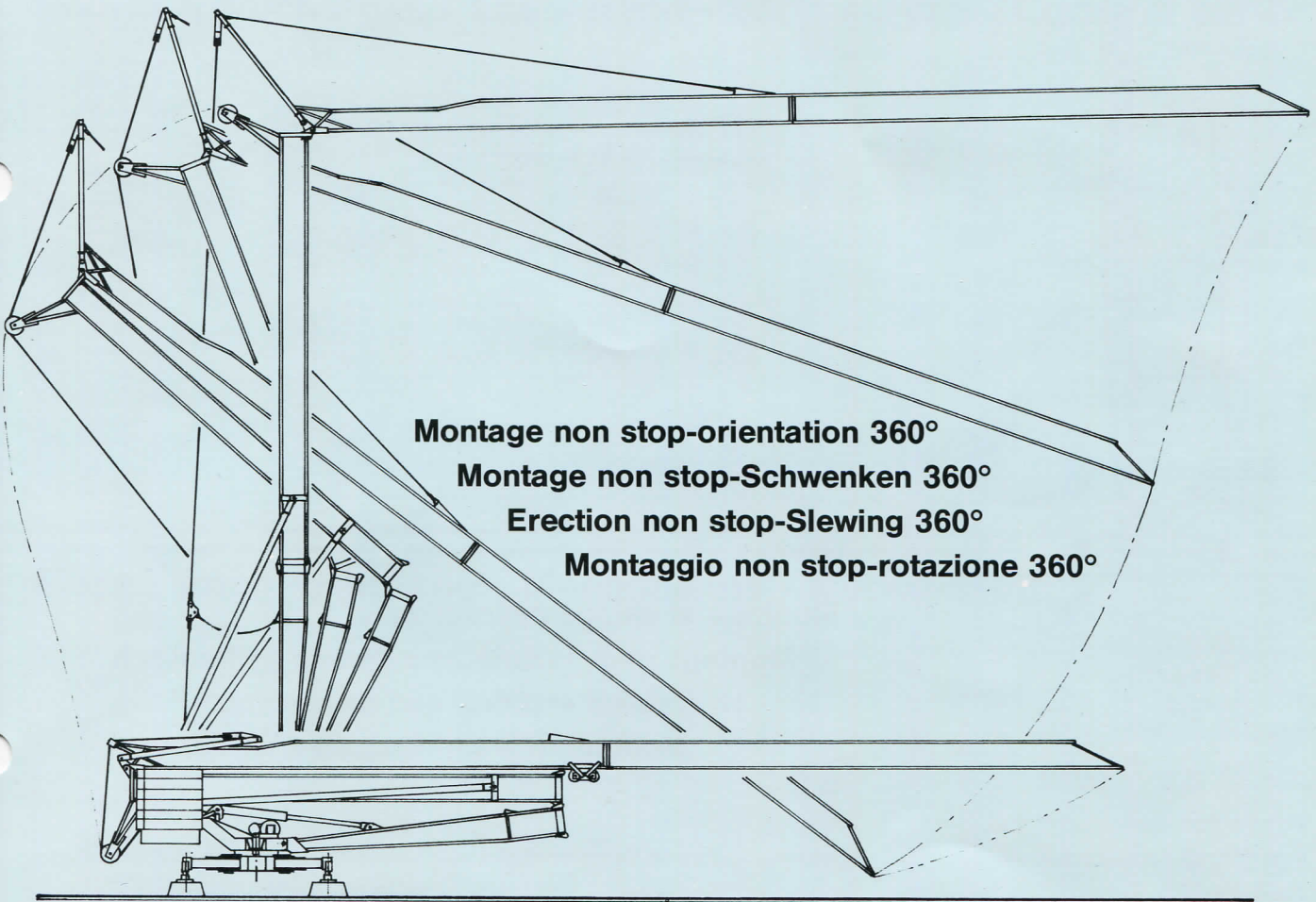




edilgru spa



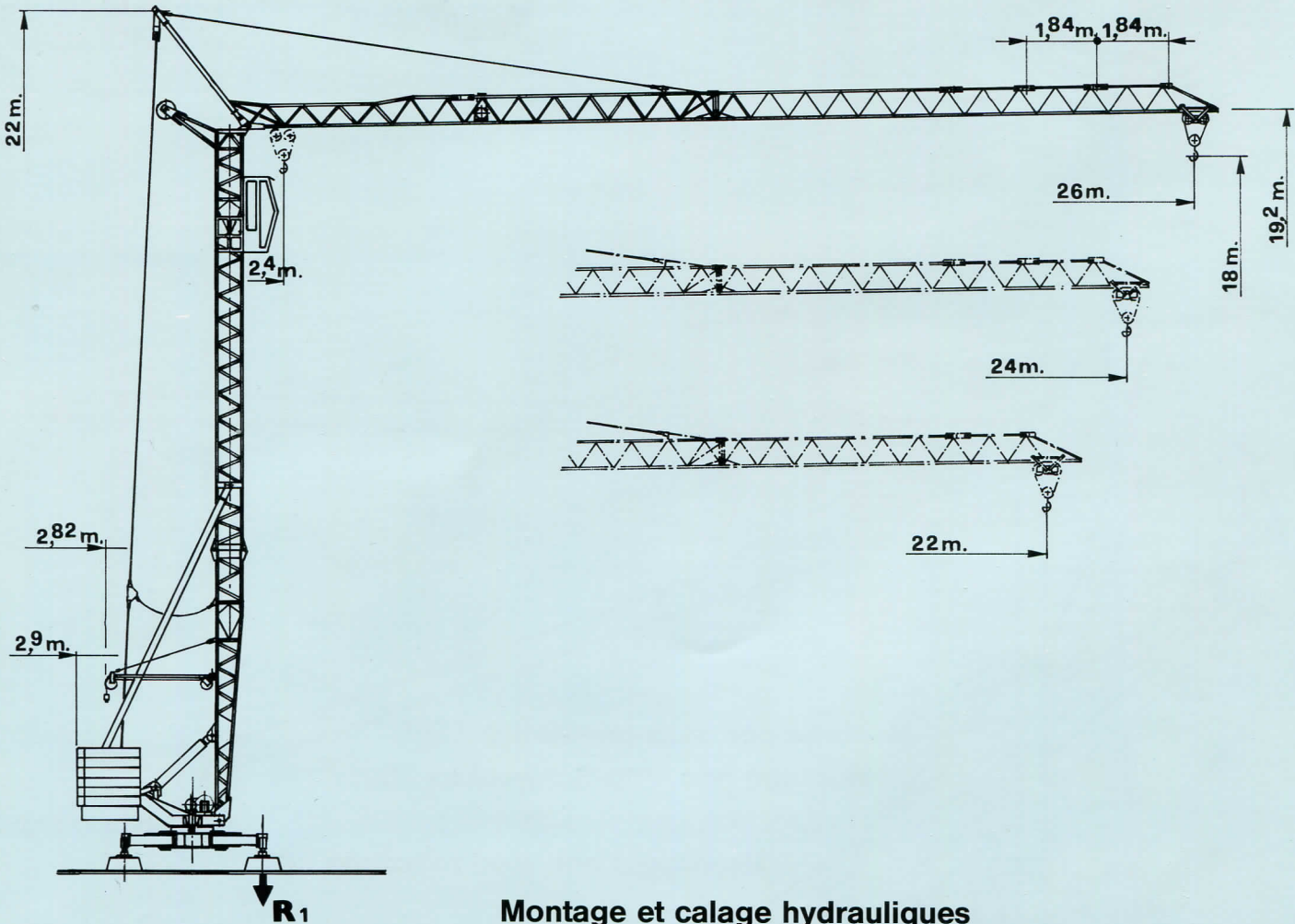
Montage non stop-orientation 360°
Montage non stop-Schwenken 360°
Erection non stop-Slewing 360°
Montaggio non stop-rotazione 360°

Mât et flèche zingués au feu
Mast und Ausleger feuerverzinkt
Tower and jib galvanized
Torre e braccio zincati

M.H. 1000-24



M.H. 1000-24

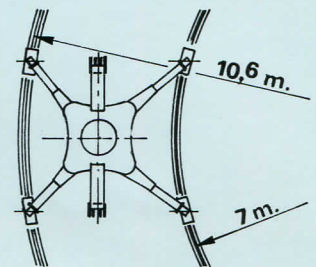
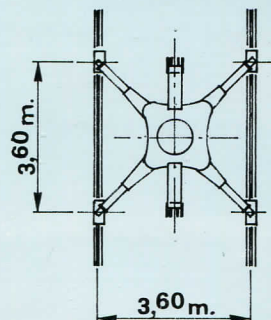
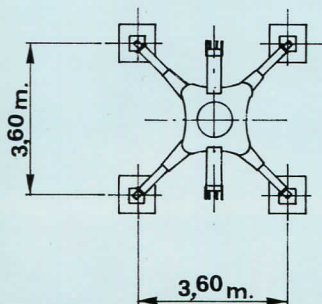


Montage et calage hydrauliques
Montage und Selbstabspindelung hydraulisch
Hydraulics erection and disassembly
Montaggio e smontaggio idraulici

Version sur vérin
 Ausführung Abstützspindeln
 Jacks version
 Versione su stabilizzatori

Version voie droite
 Ausführung gerade Schienenbahn
 Straight track version
 Versione traslazione diritta

Version voie courbe
 Ausführung kurven Schienenbahn
 Curved track version
 Versione traslazione curva



Réactions - Eckdrücke - Reactions - Reazioni

R₁ ● 11240 da N/Kg ■ 8660 da N/Kg

● En service

● In Betrieb

● In service

● In servizio

■ Hors service

■ Ausser Betrieb

■ Out of service

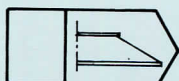
■ Fuori servizio

Poids de construction sans essieux - Konstruktionsgewicht ohne Transportachse - Dead weight without transport axles - Peso della gru senza assali Kg 10200

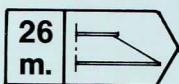
Poids du lest - Ballastgewicht - Ballast weight - Peso zavorra rotante Kg 6250

Poids du lest fixe - Festen Ballast-Gewicht - Fixed ballast weight - Peso zavorra fissa Kg 4700

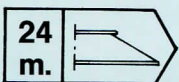
Courbes de charges - Lastkurven - Load curves - Curve di carico



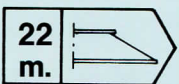
Flèche - Ausleger - Jib - Braccio



12,36	14	16	18	20	22	24	26	m. kg
2000	1725	1470	1280	1130	980	880	800	



13,66	14	16	18	20	22	24	m. kg
2000	1945	1660	1450	1280	1145	1000	



➔	14,19	16	18	20	22	m. kg
➔	2000	1740	1515	1340	1200	

Mécanismes - Antriebe - Mechanisms - Meccanismi

			m/min.	Kg	CV - PS hp	Kw
Levage Heben Hoisting Sollevamento			5	2000	1,8	1,32
			20	2000	7,5	5,5
			40	1200	9	6,6
Distribution - Katzfahren Trolleying - Carrello			30		2	1,5
Orientation - Schwenken Slewing - Rotazione			0,2 - 1 tr/min - U/min rpm - g/min		3,5 da N m Kg/m	
Translation - Kranfahren Travelling - Traslazione			30		2x1	2x0,73

Puissance électrique nécessaire
Anschlusswert
Necessary electric power
Potenza elettrica necessaria

380 V
50 Hz



Réseau - Netzstrom
Mains supply - Potenza

15 KVA

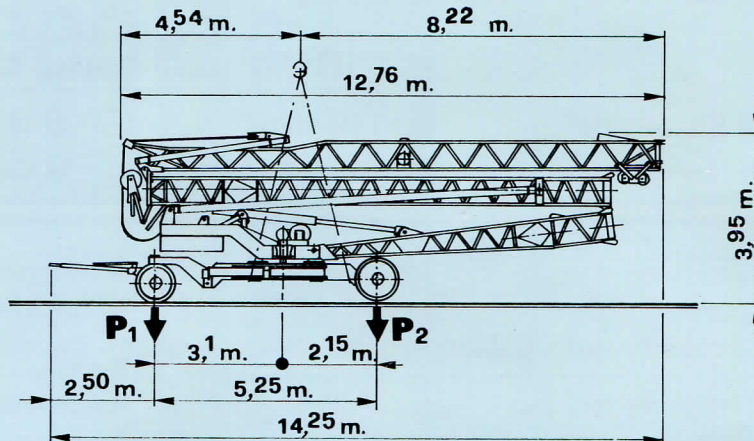
Groupe électrogène
Stromaggregat
Generator set
Gruppo elettrogeno

Nous consulter
Auf Anfrage
Consult us.
Consultarci

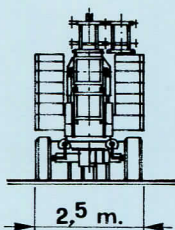
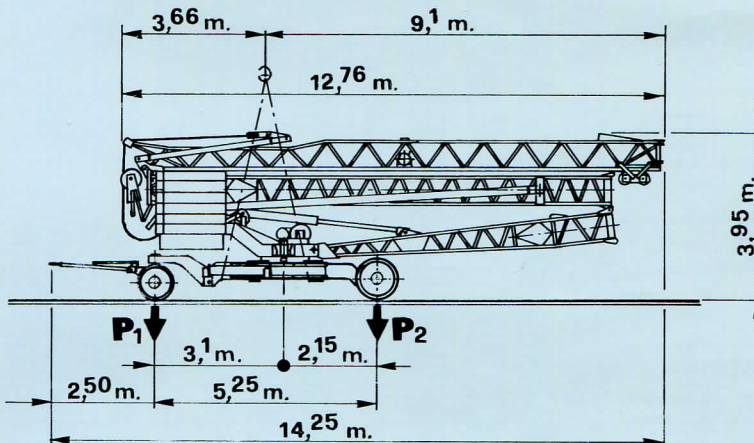
Mode de transport I - Transportart I - Kind of transport I - I soluzione di traino

	A	B
P₁ - kg	5860	11700
P₂ - kg	10490	11700
P_{Tot.} - kg	16350	23400

A



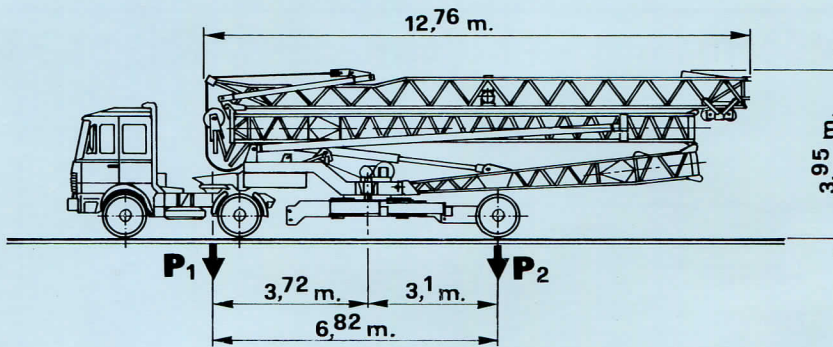
B



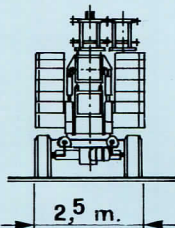
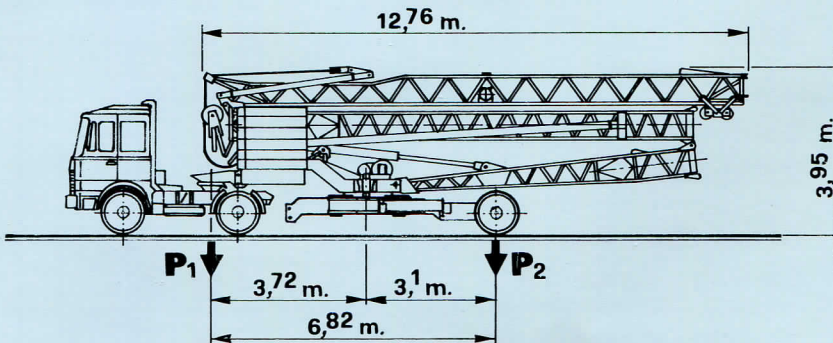
Mode de transport II - Transportart II - Kind of transport II - II soluzione di traino

	A	B
P₁ - kg	6400	11880
P₂ - kg	9500	11070
P_{Tot.} - kg	15900	22950

A



B



edilgru spa

sede e stabilimento
26015 soresina via guida
tel. 0374 / 40391 (4 linee ric. autom.)
EDILGRU - SORESINA
telex 312088 edilgru I
italia