

# KRØLL GIANT CRANES

*- the Worldwide Giant  
in Tower Cranes*

# K-10.000

## -the most profitable Solution for any large Construction Work

For more than 10 years the K-10.000 has proven its great potential in reducing construction times. It is estimated that this 10.000 ton-metre crane can top six months off a four year construction phase of a power plant. The cost savings involved are considerable. Six months interest saving plus the income from six months additional power production can amount to £ 560 M - an important financial advantage for an investment of this type. New calculations prove that these remarkable achievements can be equally transferred to any large construction projects.

And the K-10.000 offers more advantages. The well-known problems created by a forest of 30-40 smaller cranes on a large construction site are eliminated with the K-10.000.

This is - in summary - what makes the K-10.000 the most advantageous and profitable solution for any large construction work:

- \* Considerable reduction in construction times
- \* Low maintenance
- \* No risks of collisions between jibs
- \* No interference with construction activities
- \* Unlimited storage locations
- \* Simple ground transport
- \* Optimum possibilities for pre-fabrication of larger assemblies.
- \* Maximum degree of modularization.

The K-10.000 is available in two versions: a static version with a work area of 200 m diameter and a railgoing version on a rail-going portal base with unlimited work area.

The load capacity is 120 t over its entire reach of 100 m. At 44 m the capacity is 240 t and in a special version a capacity of 360 t at a reach of 61 m can be achieved.

The K-10.000 also has a top-mounted auxiliary crane, which independently of any heavy lift operation can work with loads up to 20 t.

The main standard hook height for the K-10.000 is 86 m, allowing smaller cranes and mobiles to work underneath it with no risks of collisions. A considerable effort has been invested to make the crane operable under any climatic conditions and in wind speeds up to 20 m/s.

Special care has been taken for transport by land or sea.

The number of wide loads is limited and still within the permissible dimensions.

Furthermore the K-10.000 is designed with a hydraulic telescoping system so it will telescope from low to final height under its own power.

The highest degree of safety is achieved by compliance with international recognized codes for crane design. The K-10.000 is equipped with the most advanced crane control systems

with motion control and monitored safety systems, which in seconds will give the crane operator the calculated stress in all critical members.

The K-10.000 means proven performance, complete documentation, guaranteed delivery, full technical assistance during erection, commissioning, and after-sales-service.

The K-10.000 opens completely new roads for both design and planning of any heavy lifting operations.

The full benefit from this crane can only be achieved if it is incorporated in the overall planning at a very early stage. Our technicians are at your service also at this stage.

① Every movement is within the vision of the operator

② The K-10.000 mounted on a rail-going portal base

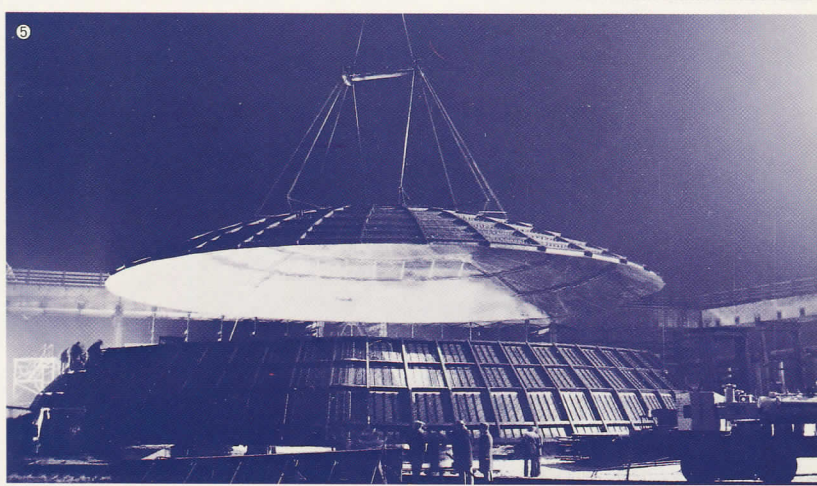
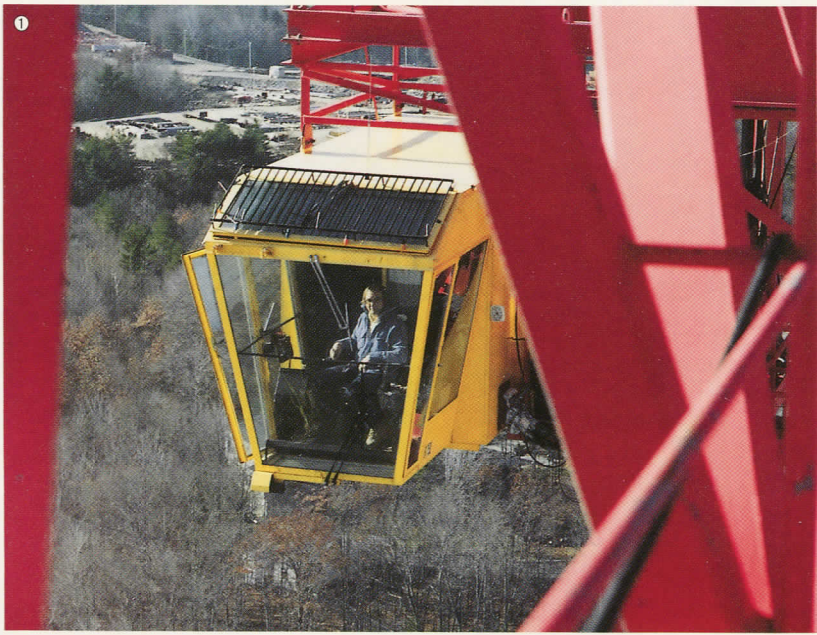
③ The hook is controlled by a DC-system allowing complete stepless control over the whole load and speed range

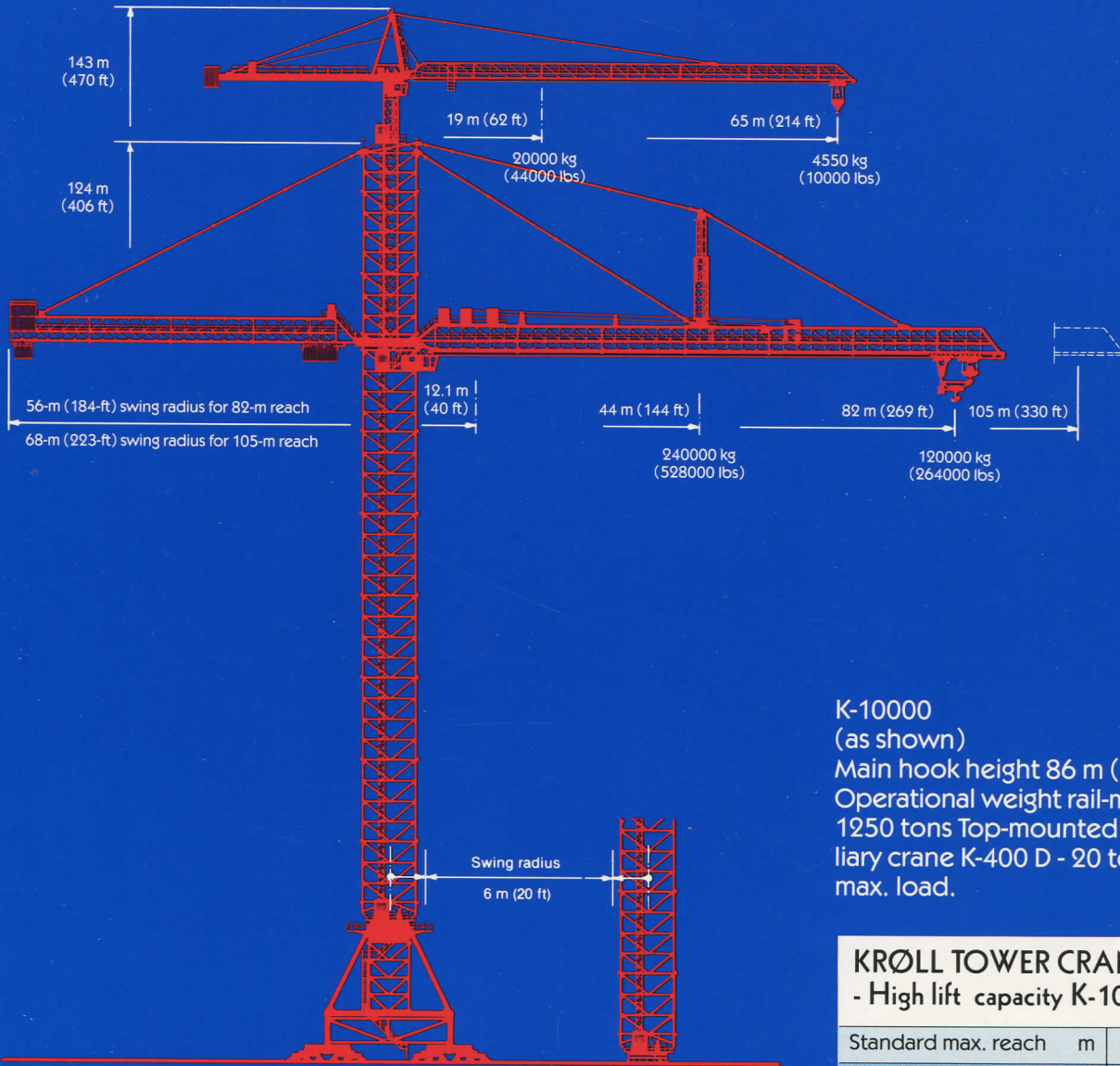
④ K-10.000 at work at Seabrook Nuclear Power Station, USA

⑤ K-10.000 lifting 100 tonnes.

⑥ The K-10.000 at work at Zaporoch Nuclear Power Station, USSR

K-10.000 - the World's largest Capacity Tower Crane  
for Planning with Foresight and Initiative

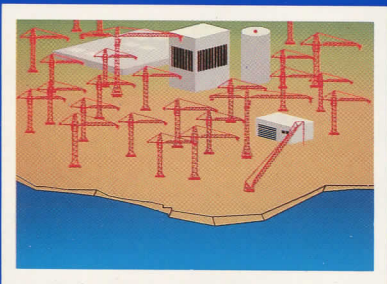




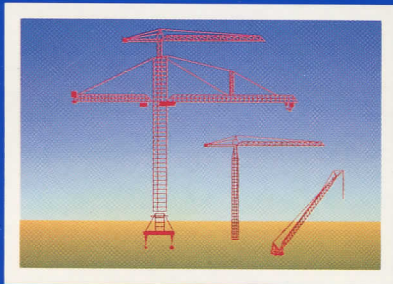
**K-10000**  
 (as shown)  
 Main hook height 86 m (280 ft)  
 Operational weight rail-mounted  
 1250 tons Top-mounted aux-  
 iliary crane K-400 D - 20 tons  
 max. load.

**KRØLL TOWER CRANES**  
 - High lift capacity K-10000

Standard max. reach	m	84
max. reach	m	100
min. reach	m	14
Load-reach	tons m	120 82
Max. load-reach	tons m	120 82
Height under hook	m	86
Mast dimensions	m x m	8 x 8
Railgauge standard	m	18



The well-known problems created by a forest of 30-40 smaller cranes on a large construction site are eliminated with the K-10.000.



The main standard hook height for the K-10.000 is 86m, allowing smaller cranes and mobiles to work underneath it with no risks of collisions.

Height under hook can be increased by using a larger mast type. K-10.000 hook system allows 60 t to 84 m. Telescoping equipment available.



**KRØLL CRANES A/S**

Nordkranvej 2 · DK-3540 Lyng · Denmark  
 Phone: +45 48 18 74 00  
 Telefax: +45 48 18 88 07