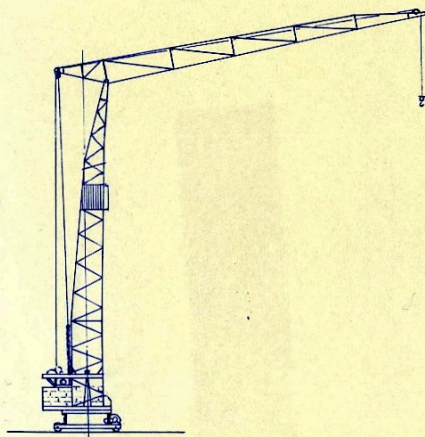


**Liebherr Turmdrehkran  
Baureihen „TK“ und „F“  
1950er**

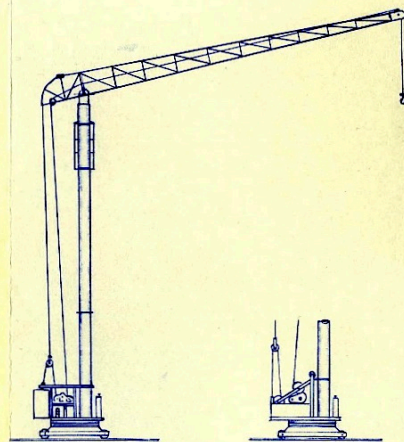
**Archiv Pius Meyer**



# Typen TK 6, 8, 14 und F 6, 8



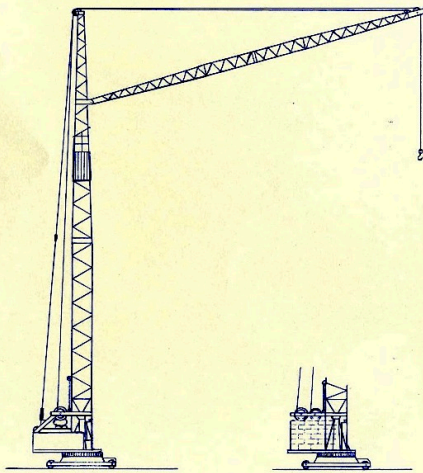
Type  
TK 6, TK 8, TK 14



Type  
Form 6, Form 8

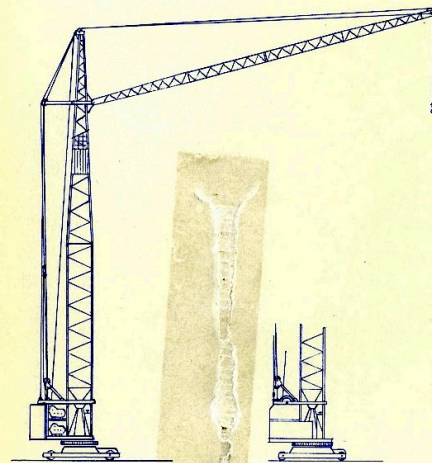


# Typen F 9, 10, 16, 20, 28, 30 und F 12, 14, 18, 20, 24, 25, 32, 36, 40



Type

Form 9, Form 10, Form 16, Form 20, Form 28, Form 30



Type

Form 12, Form 14, Form 18, Form 20, Form 24, Form 25,  
Form 32, Form 36, Form 40



# Typen F 14A, 20A, 25A, 32A, 40A, 50A und TK 28, 30, 36, 40, 50, 60, 66

