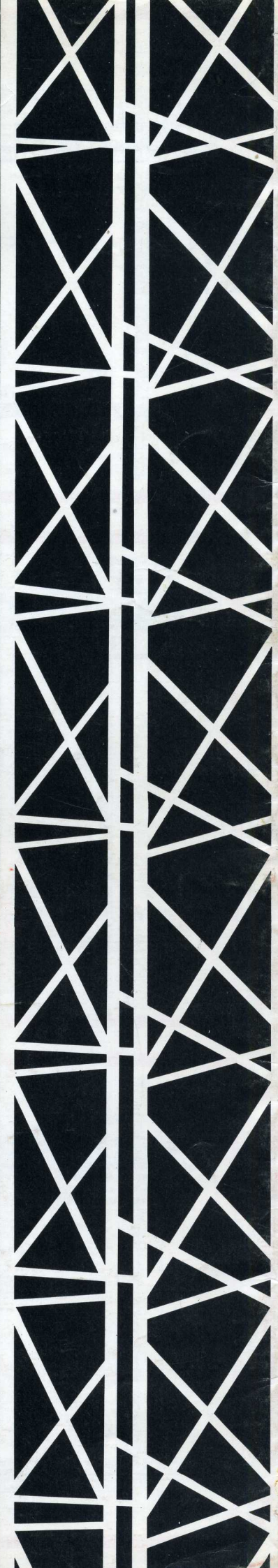


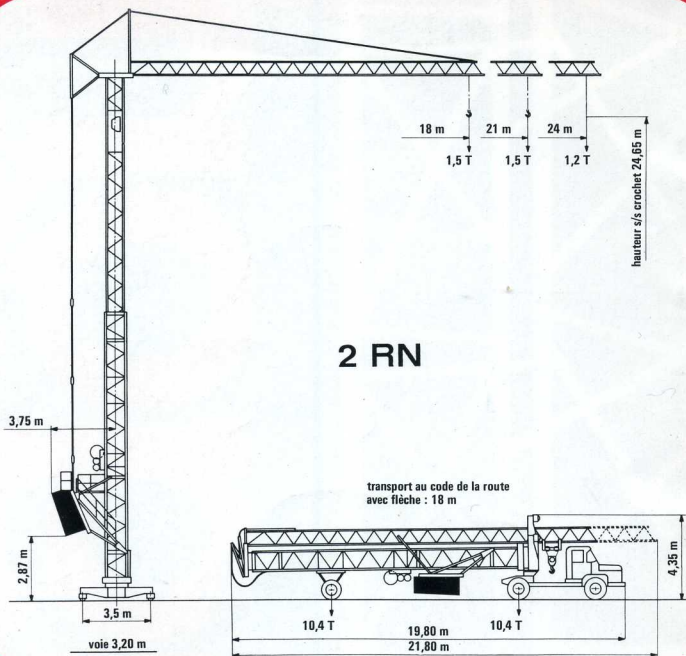
usines de Belley (photo Baranger)



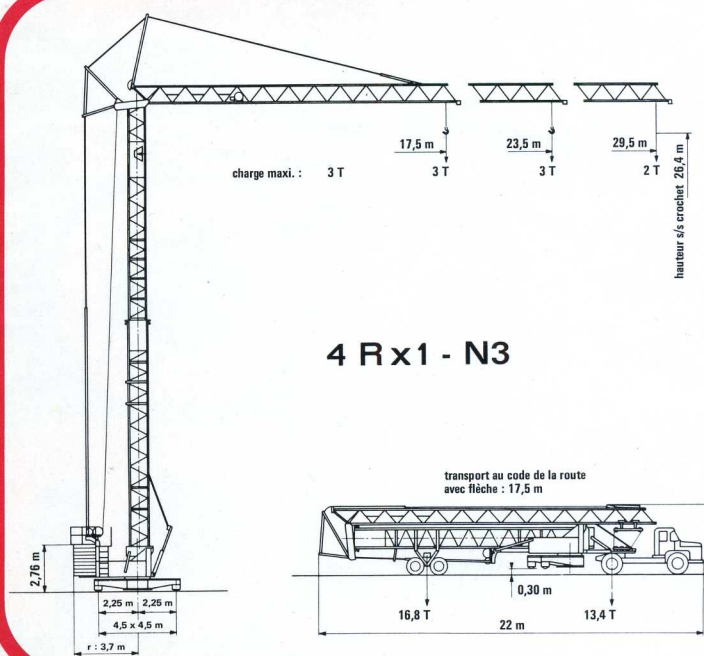
grues pignon

madelon publicité - chambéry giraud-rivoire - lyon

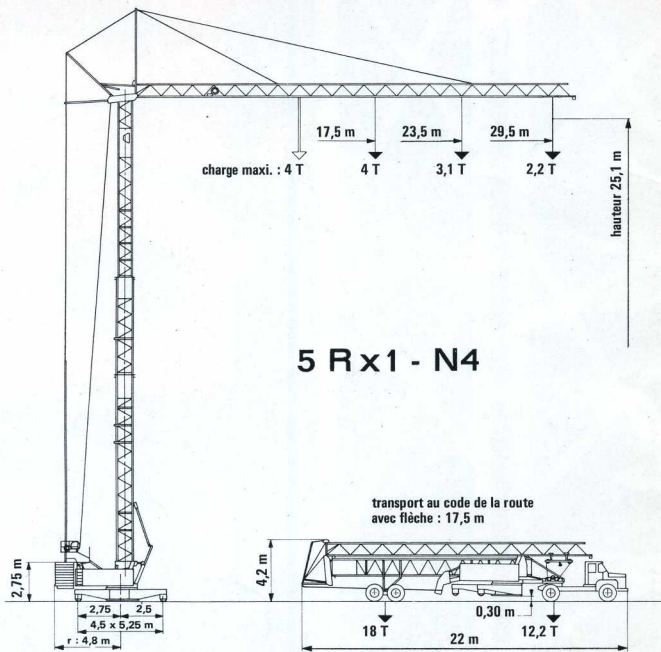
r.c. lyon 64 B 464



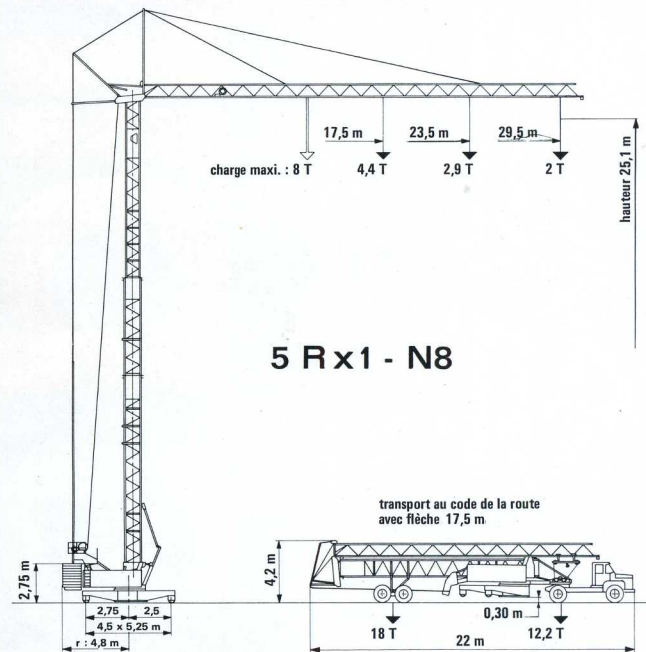
2 RN



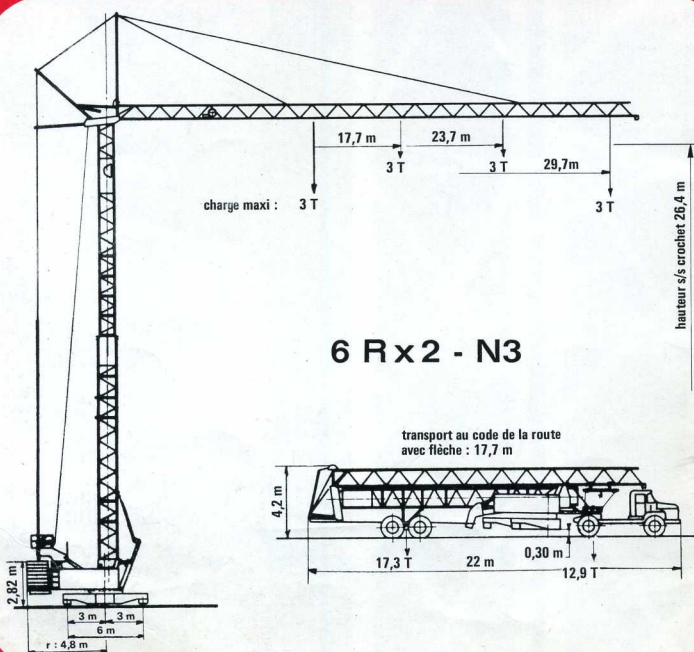
4 Rx1 - N3



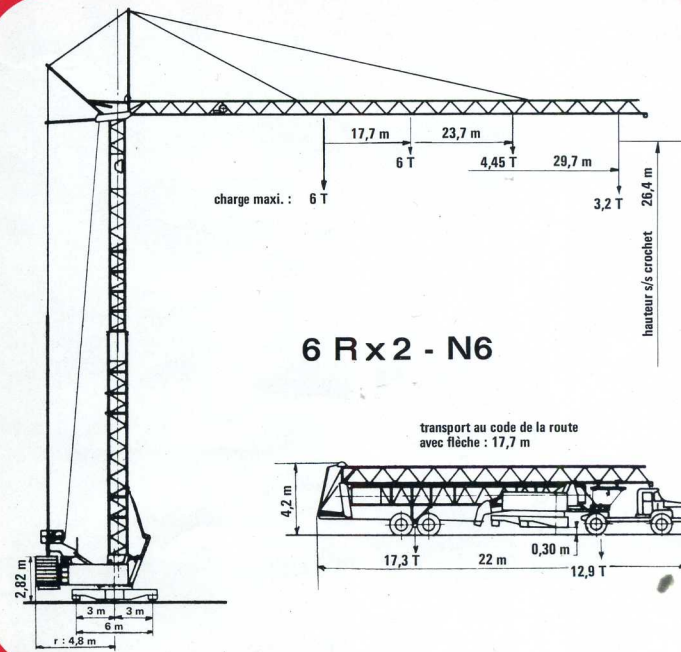
5 Rx1 - N4



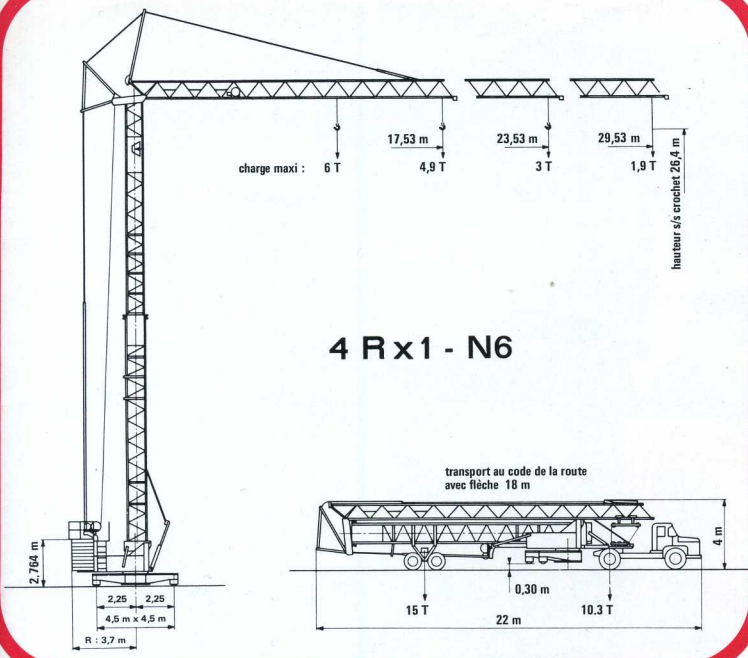
5 Rx1 - N8



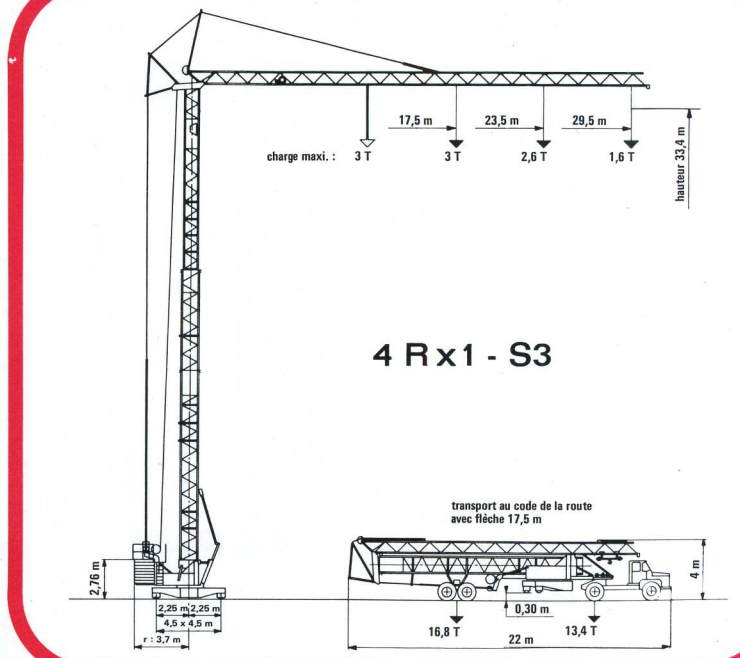
6 Rx2 - N3



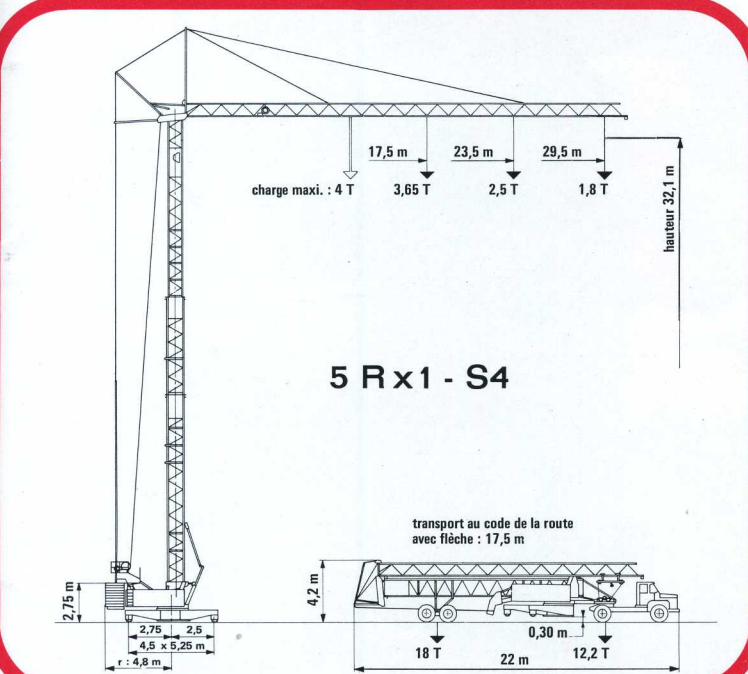
6 Rx2 - N6



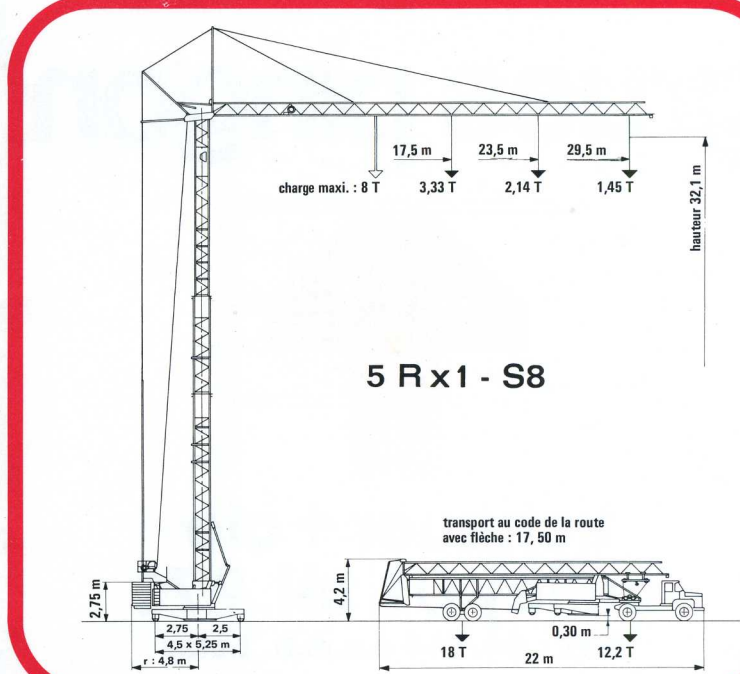
4 R x 1 - N6



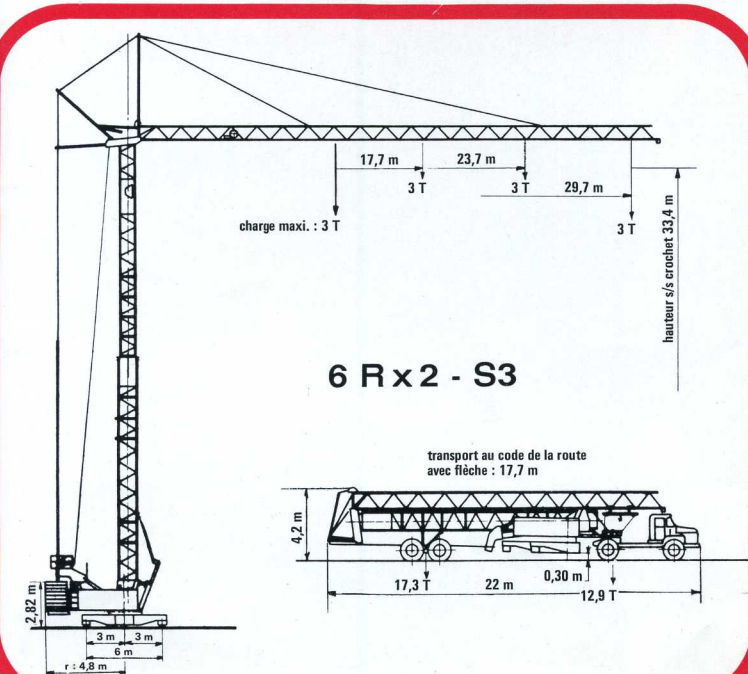
4 R x 1 - S3



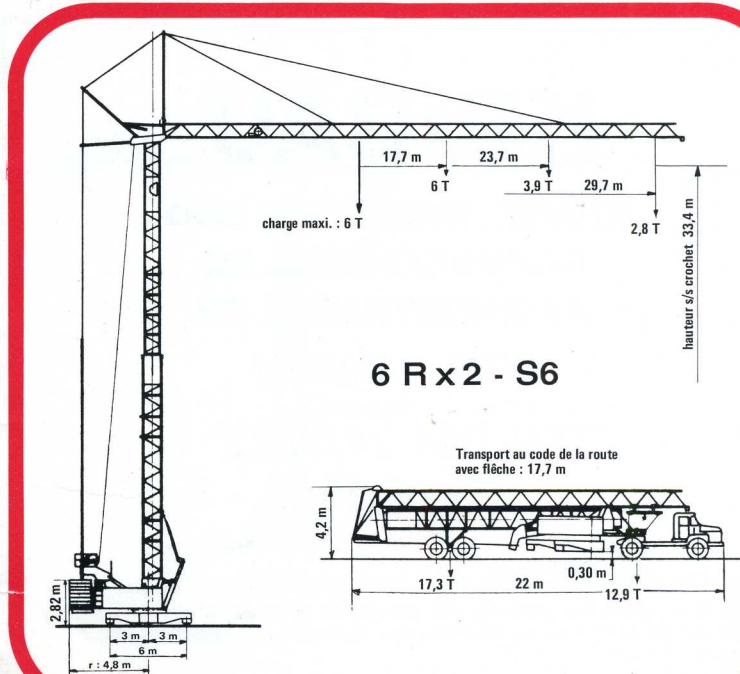
5 R x 1 - S4



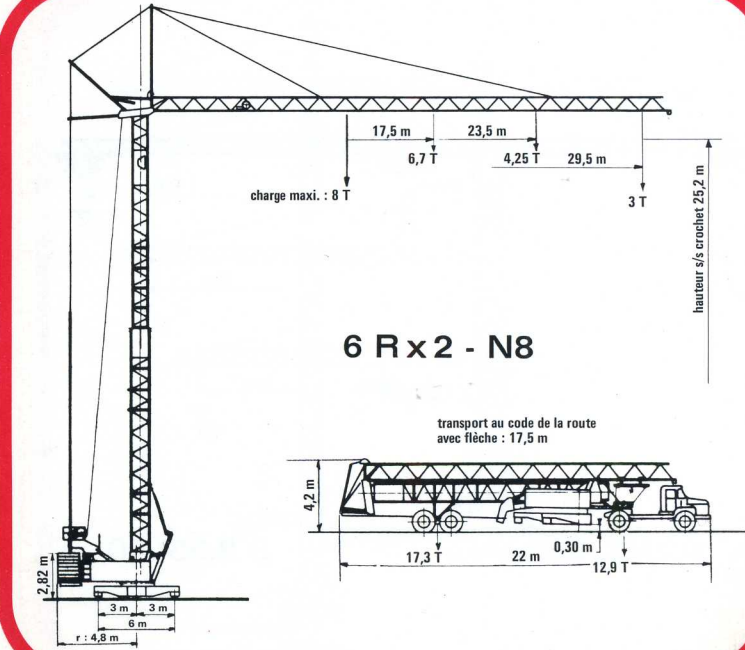
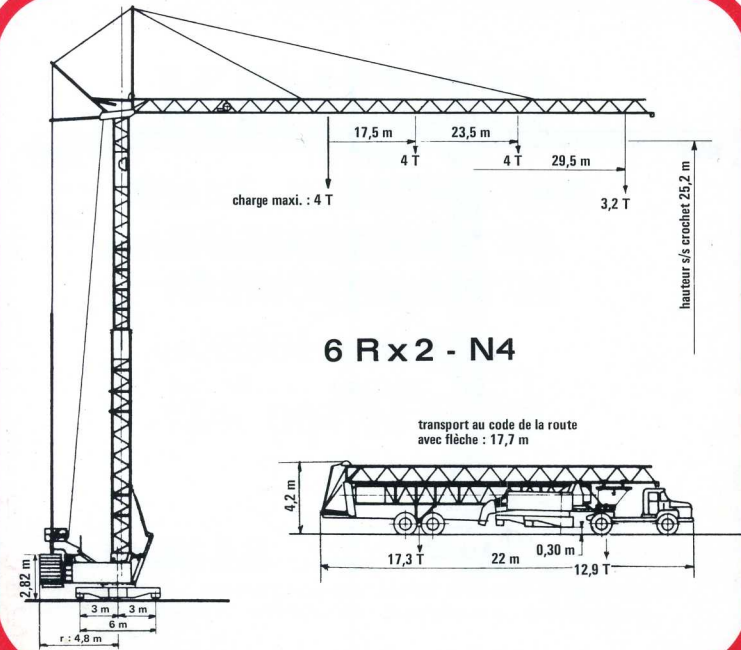
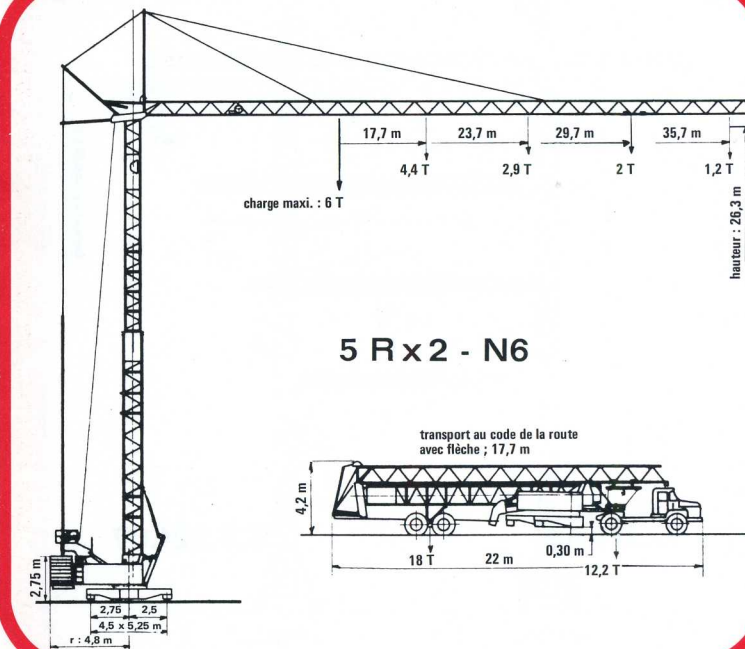
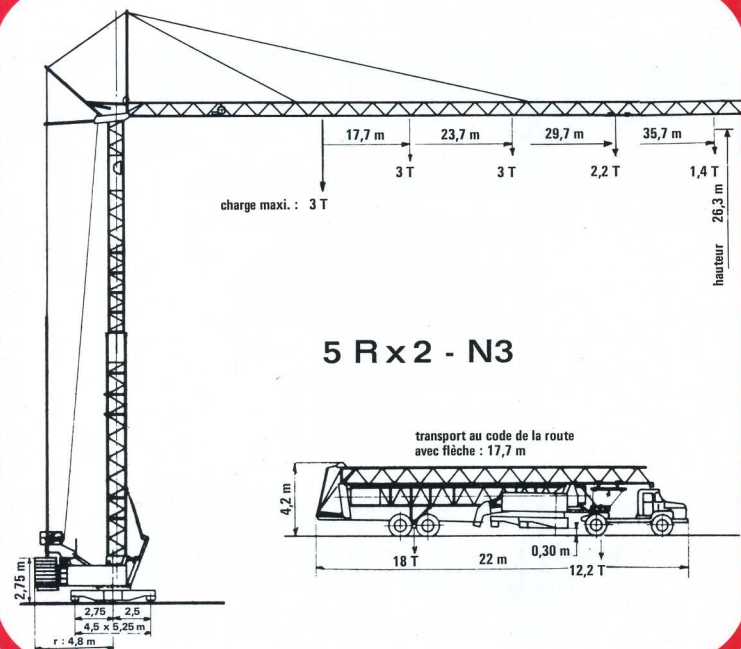
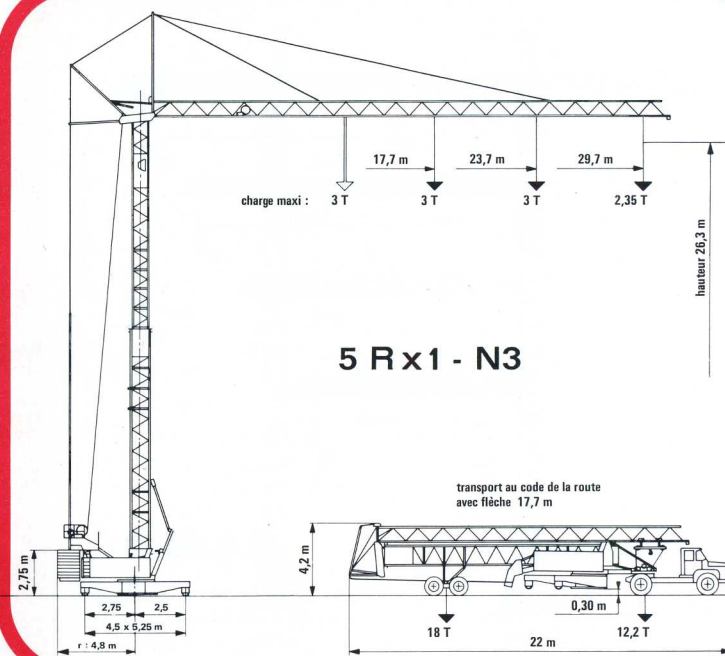
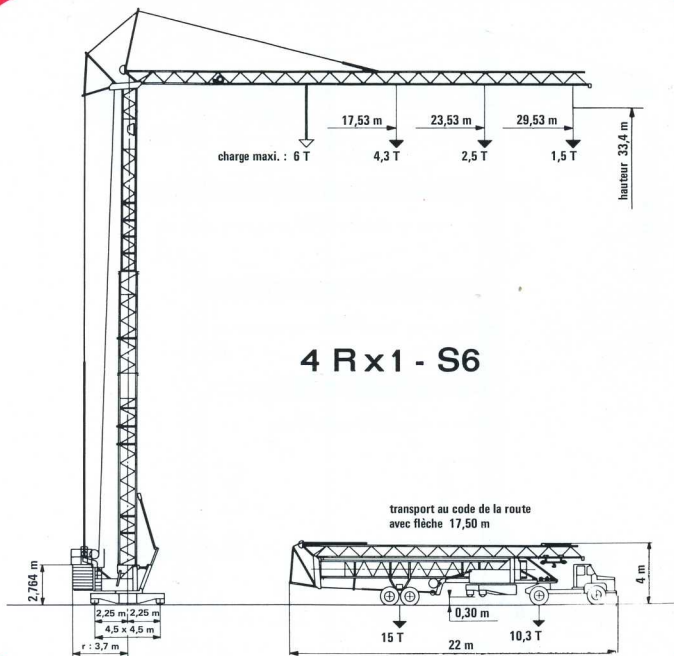
5 R x 1 - S8

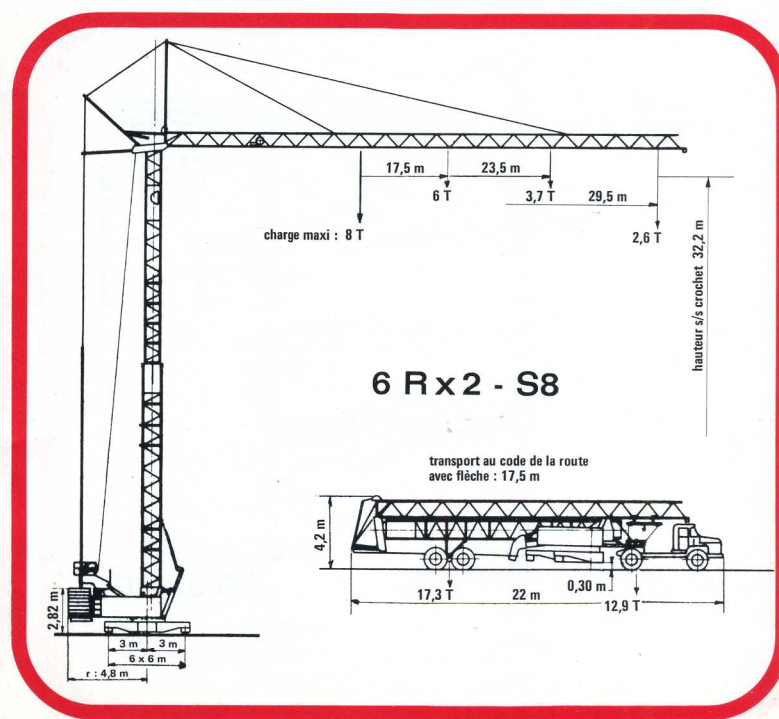
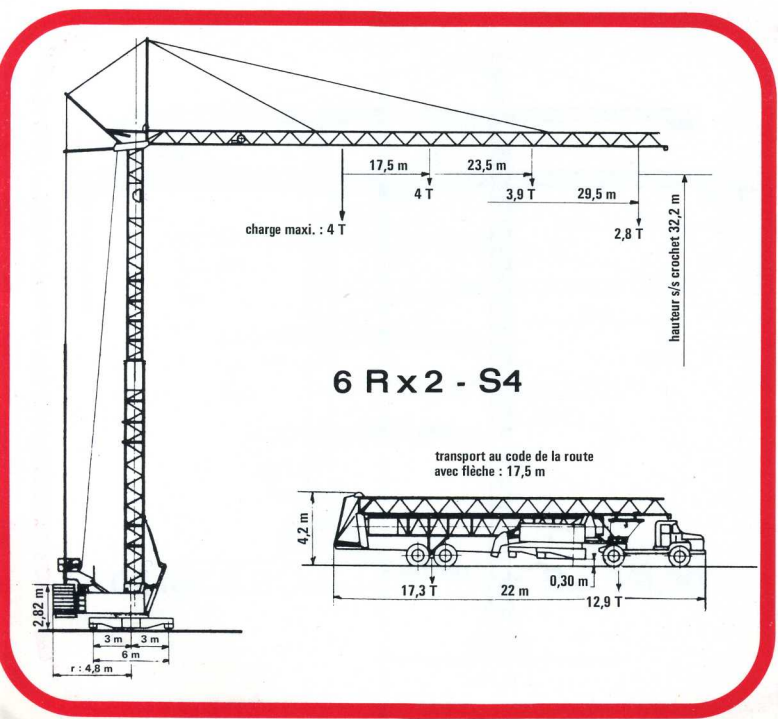
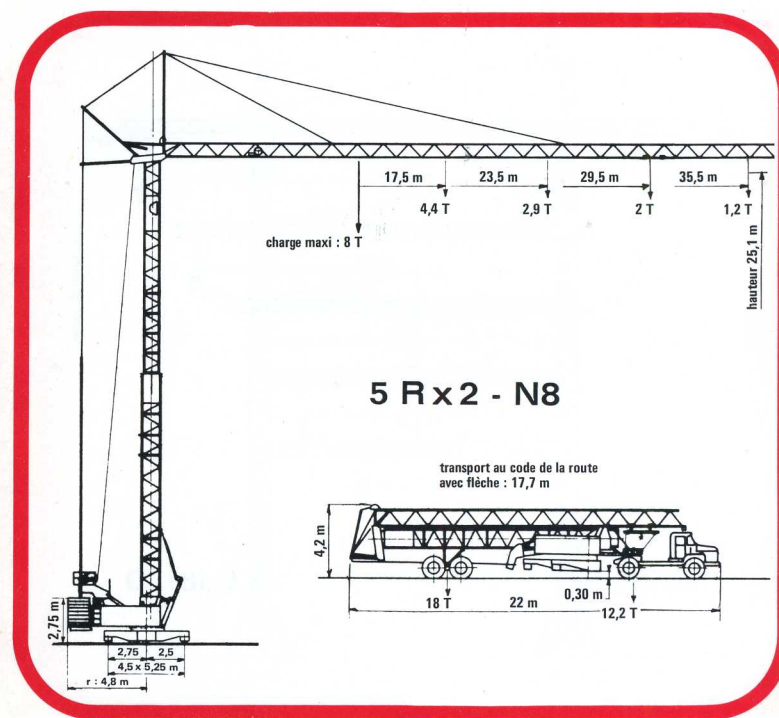
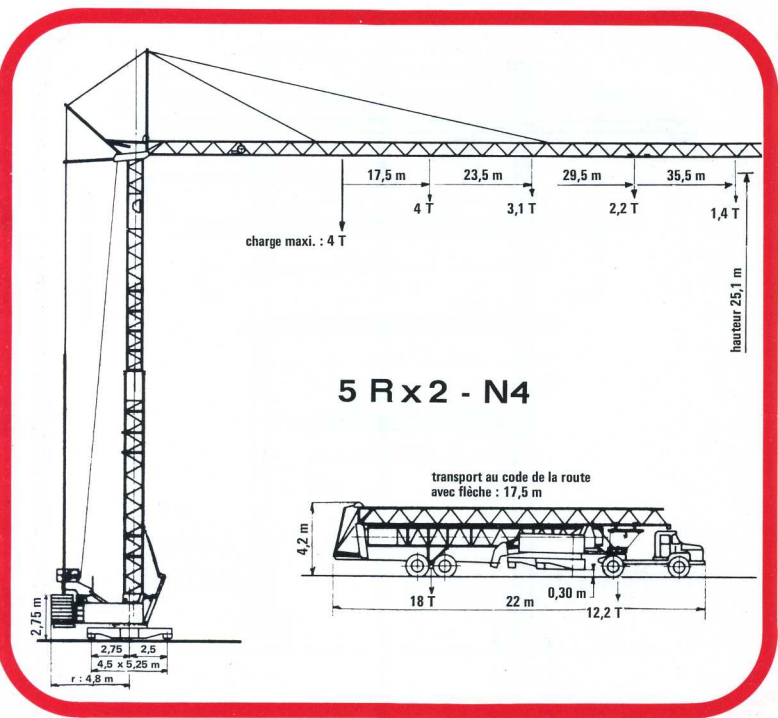
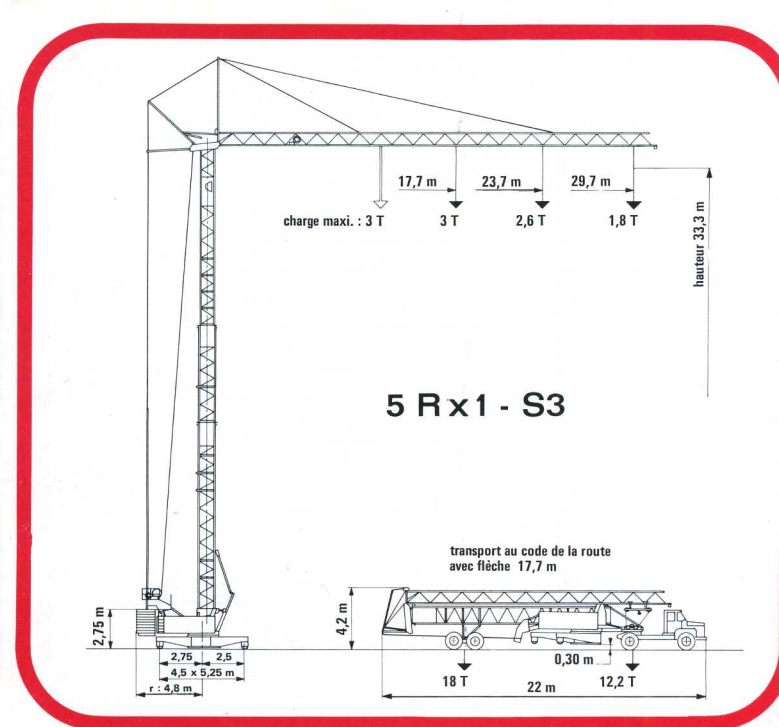
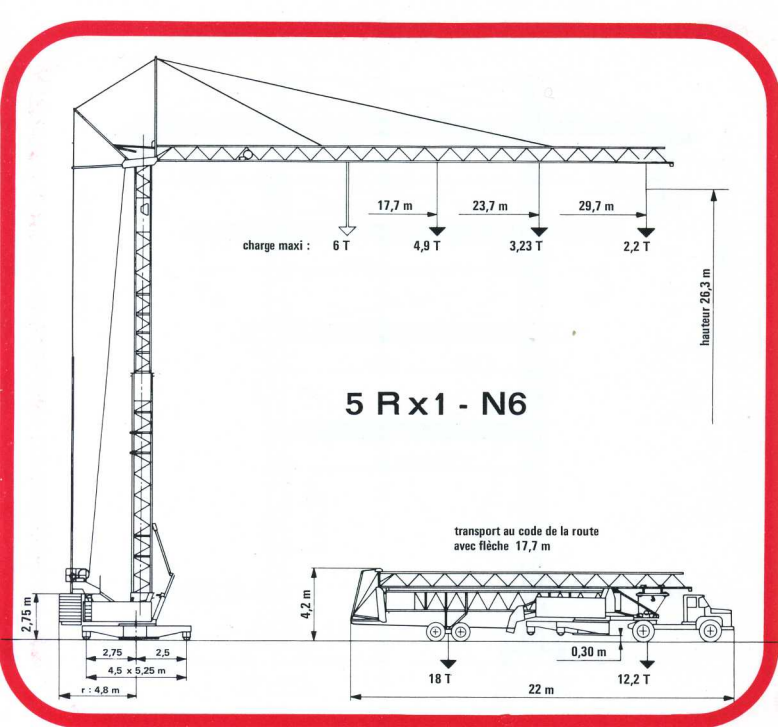


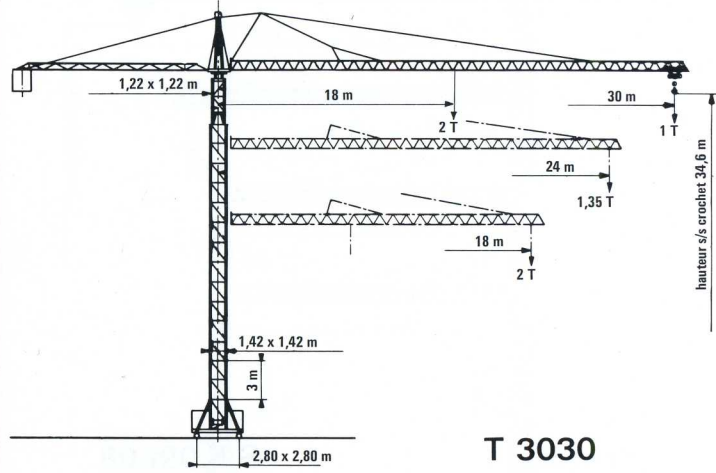
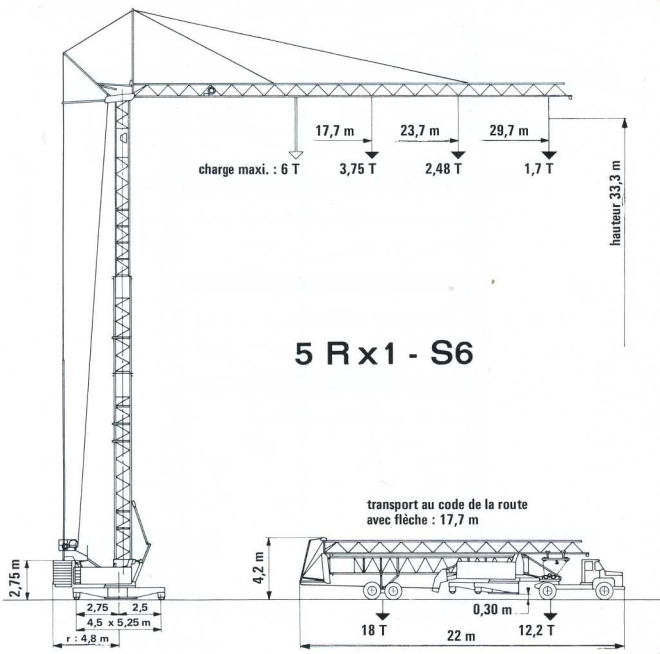
6 R x 2 - S3



6 R x 2 - S6



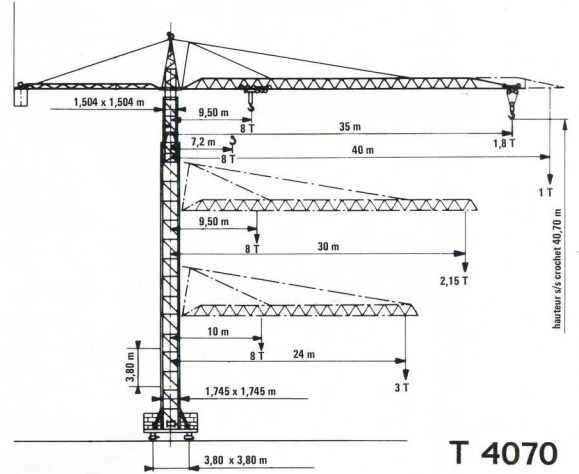
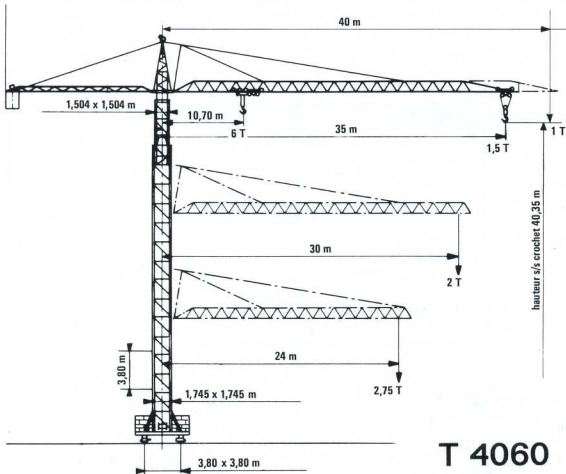
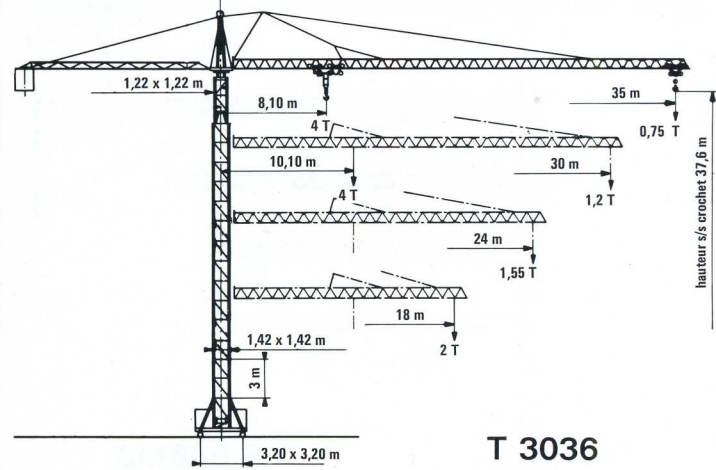


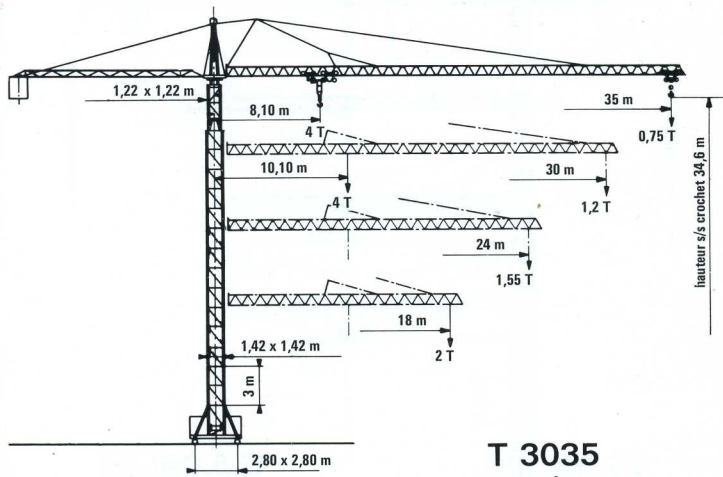


grues pingon

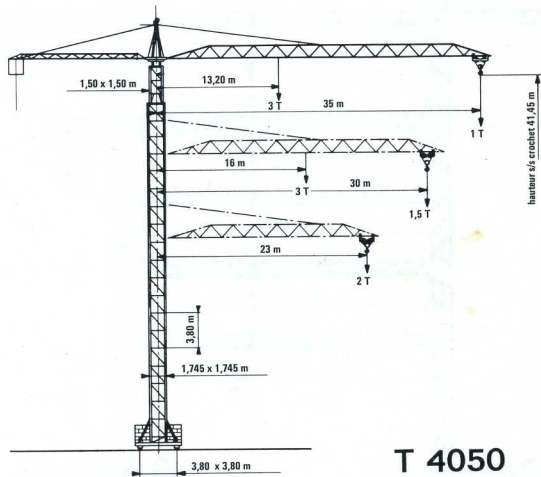


tichauer + cie
belley 01 | tél. 271
 telex : 34.744 s.c.m.b. beley

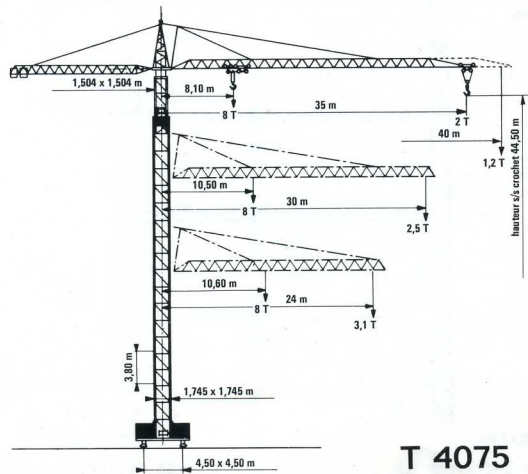




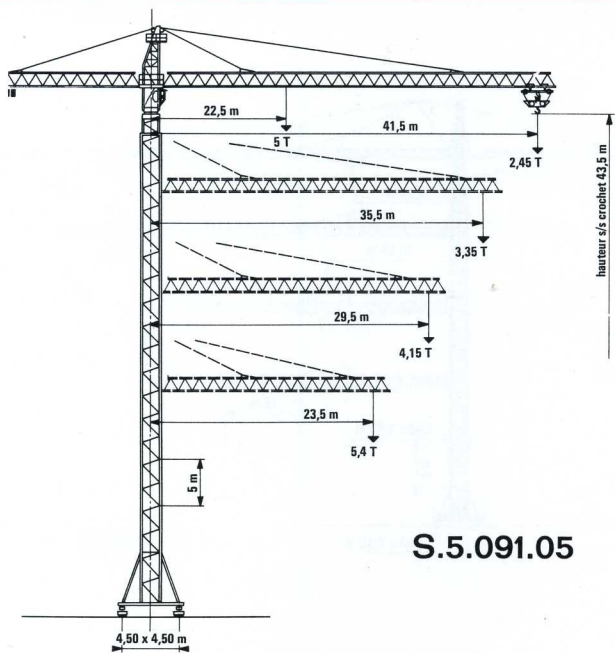
T 3035



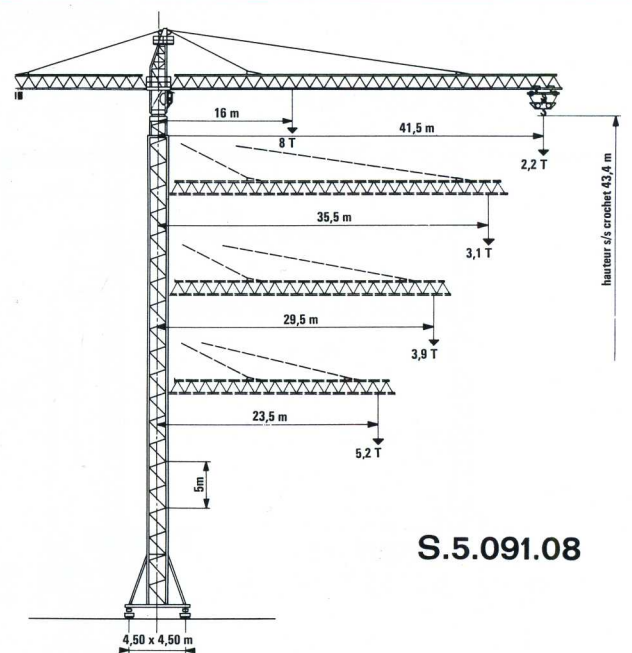
T 4050



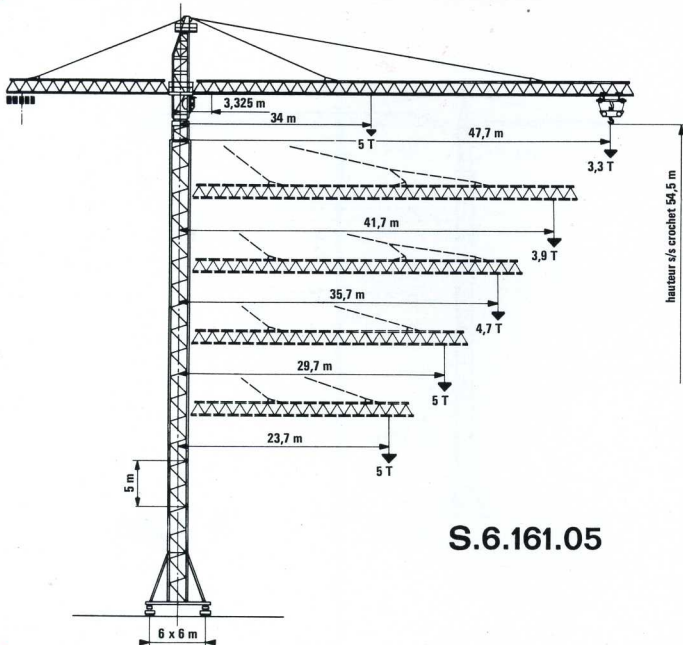
T 4075



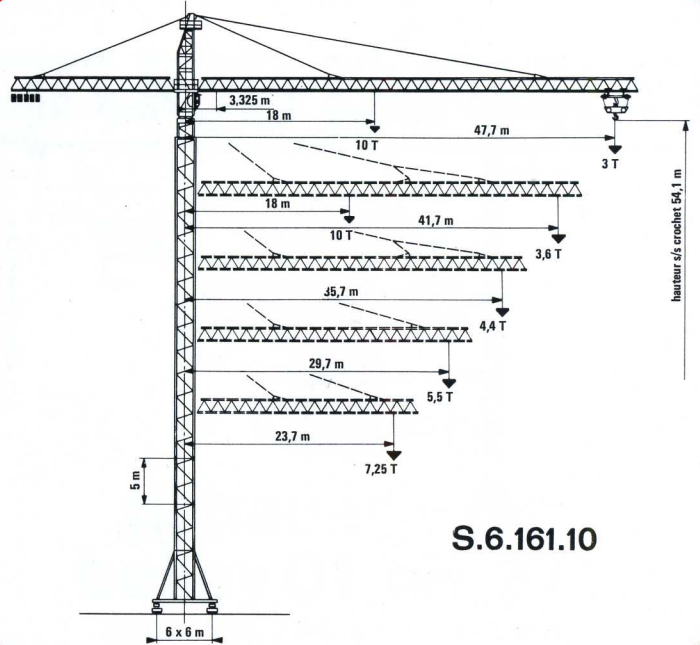
S.5.091.05



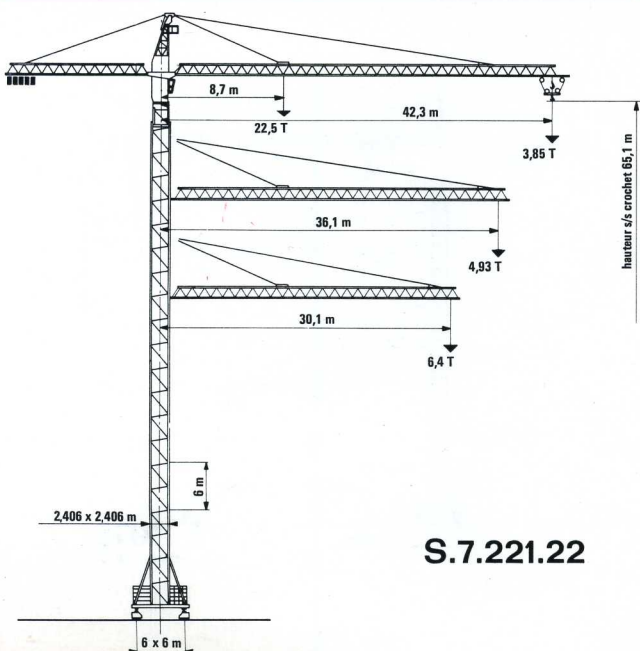
S.5.091.08



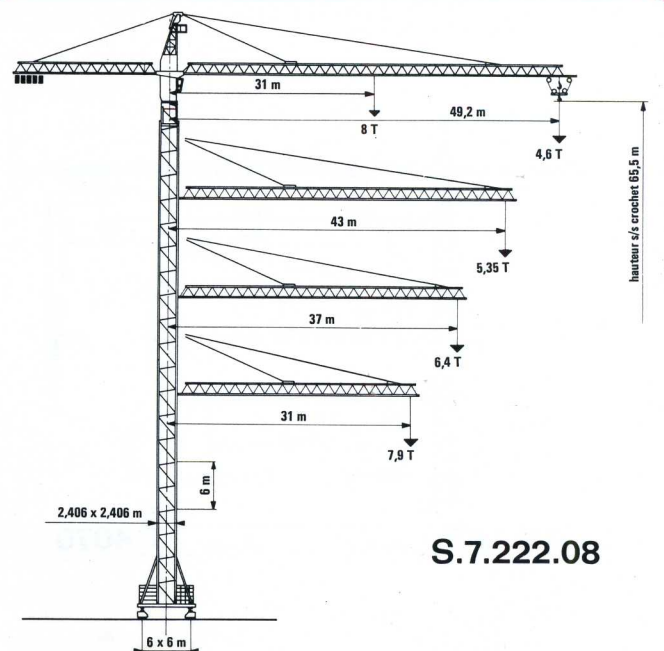
S.6.161.05



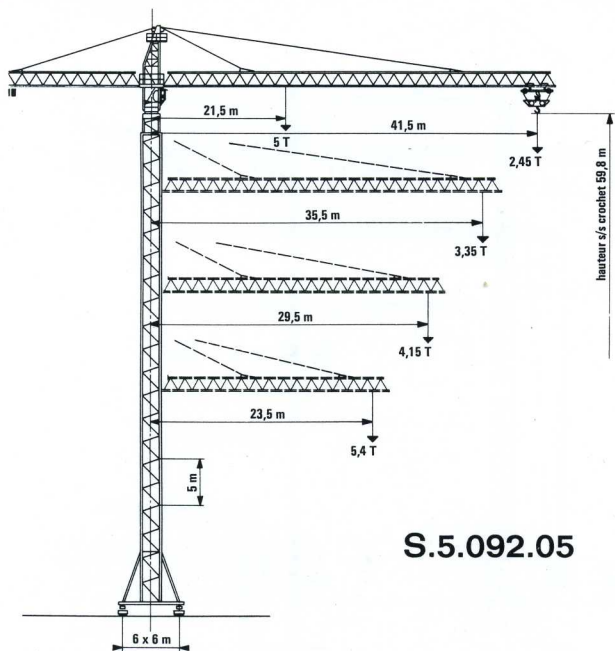
S.6.161.10



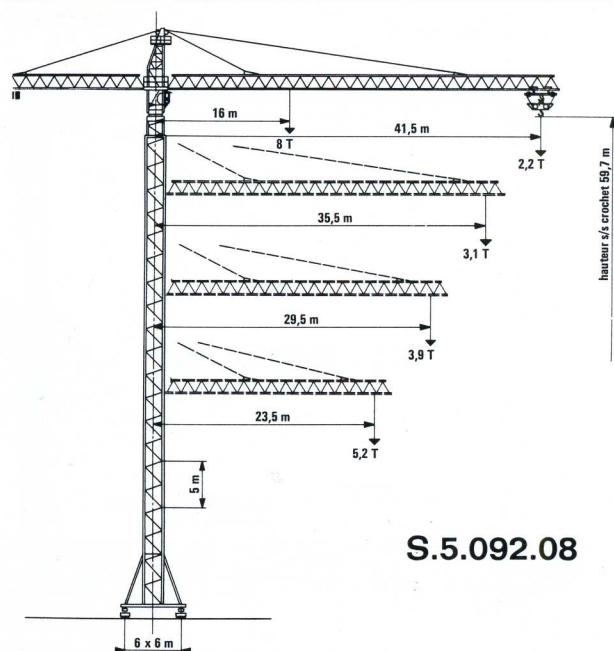
S.7.221.22



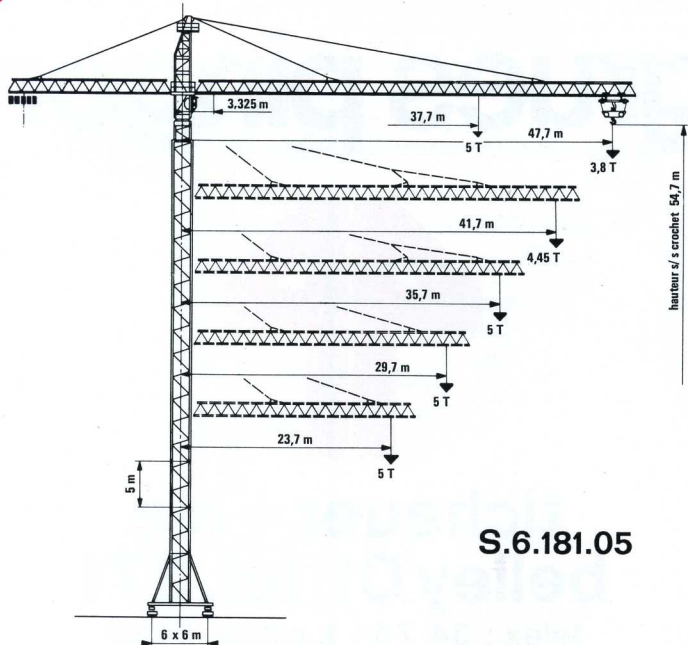
S.7.222.08



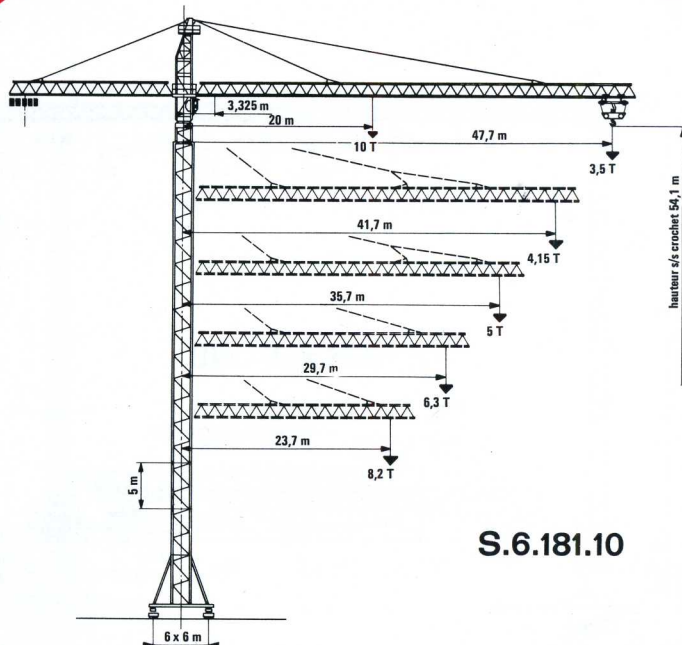
S.5.092.05



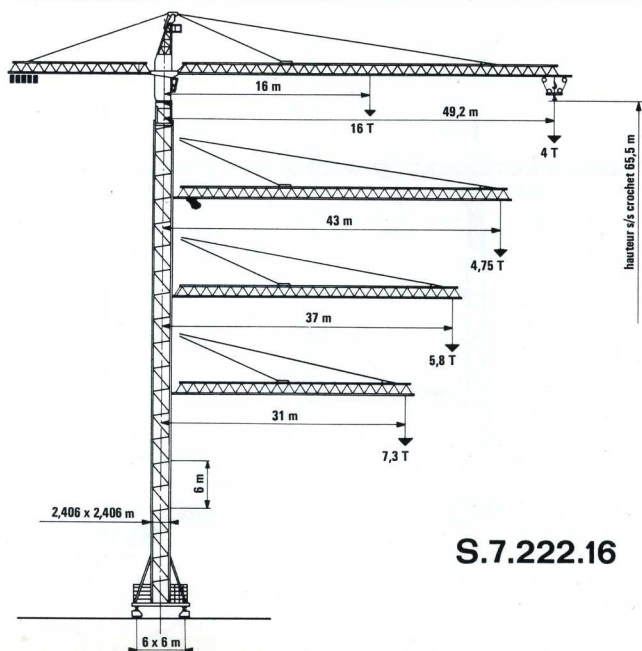
S.5.092.08



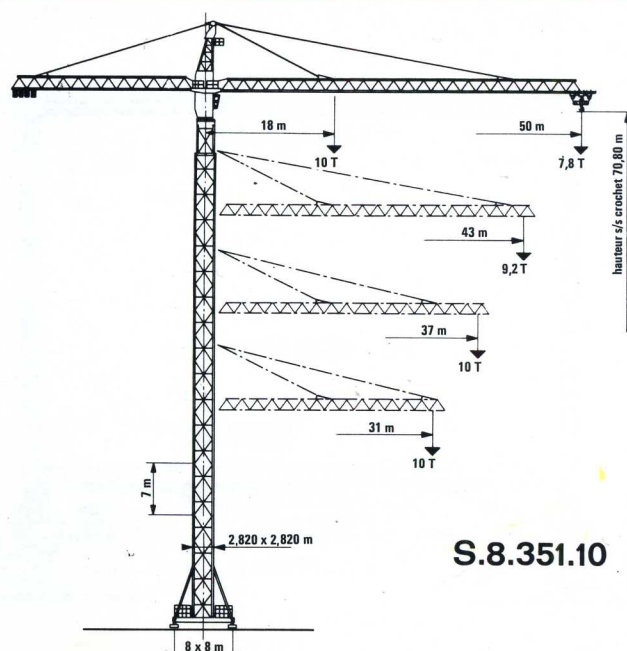
S.6.181.05



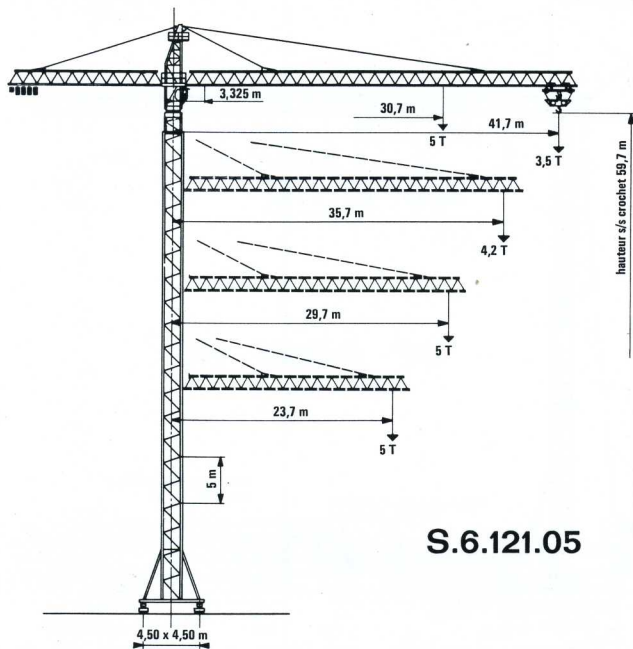
S.6.181.10



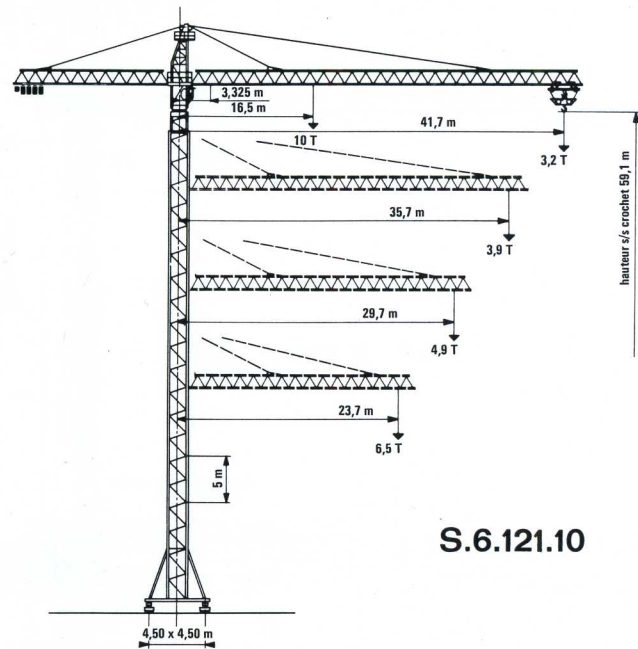
S.7.222.16



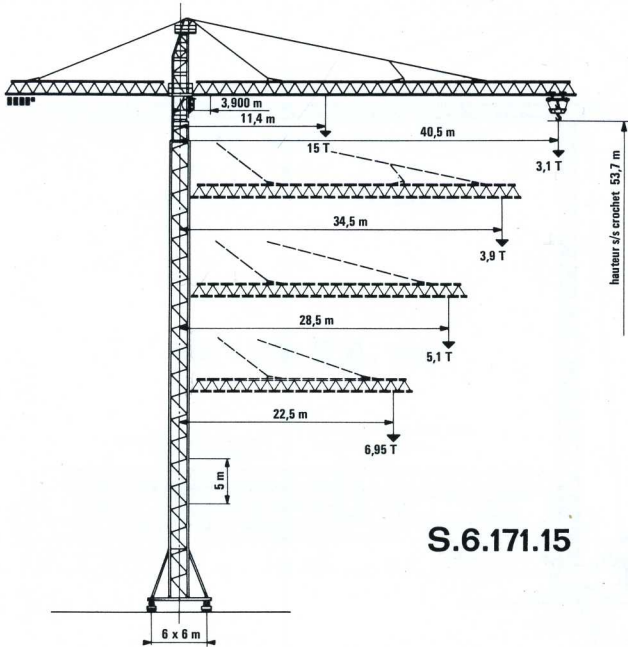
S.8.351.10



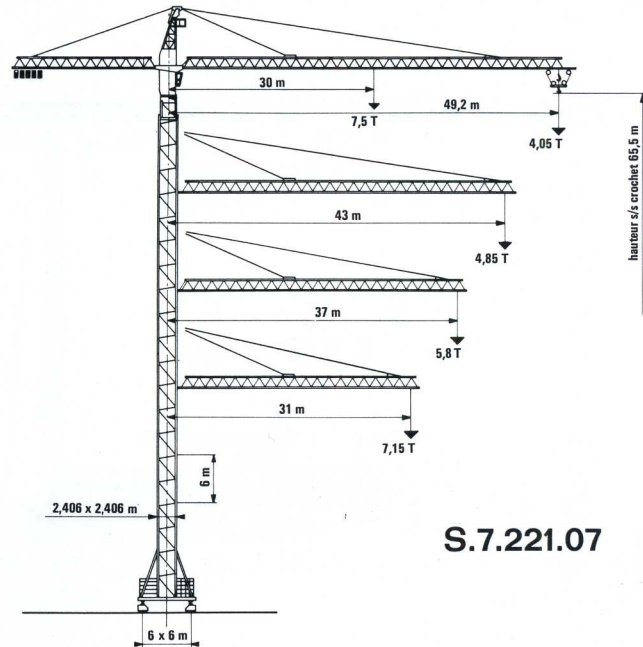
S.6.121.05



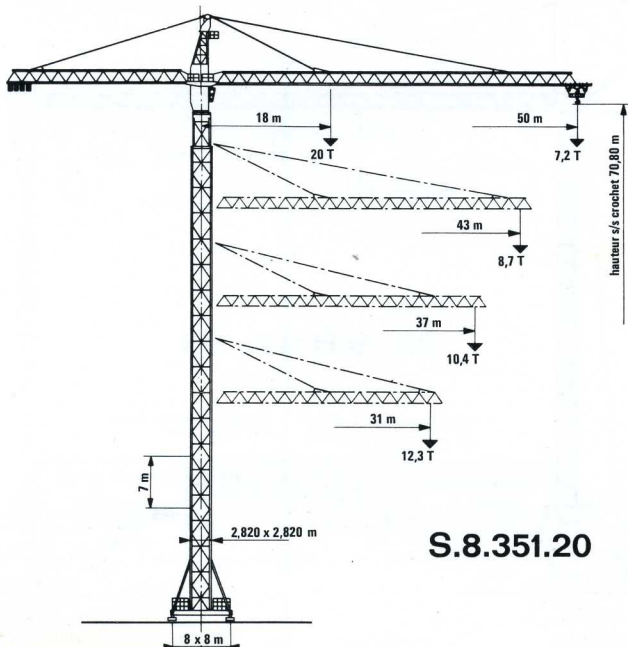
S.6.121.10



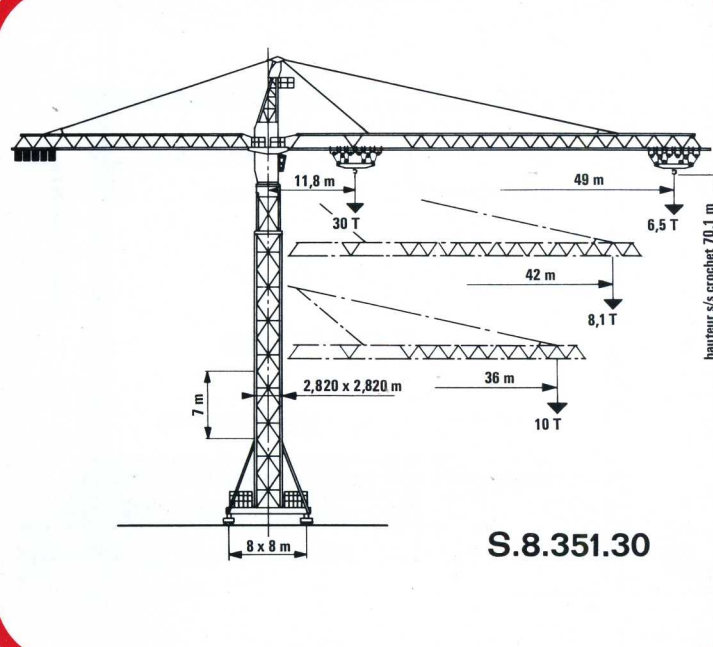
S.6.171.15



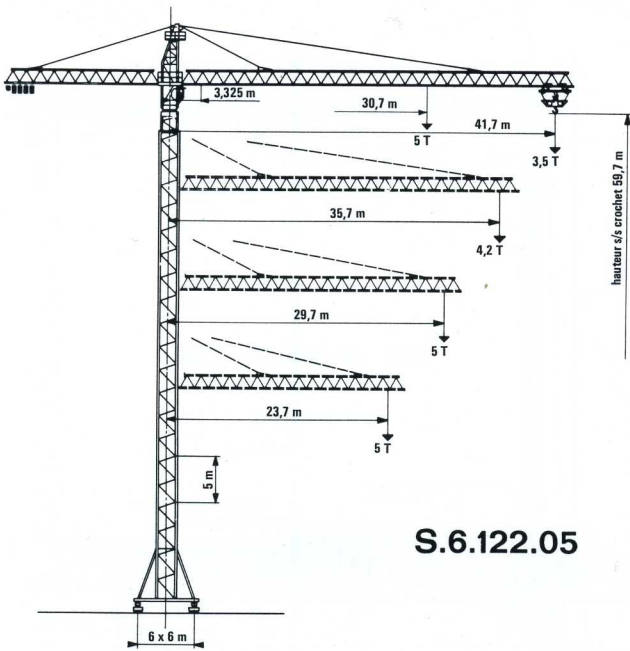
S.7.221.07



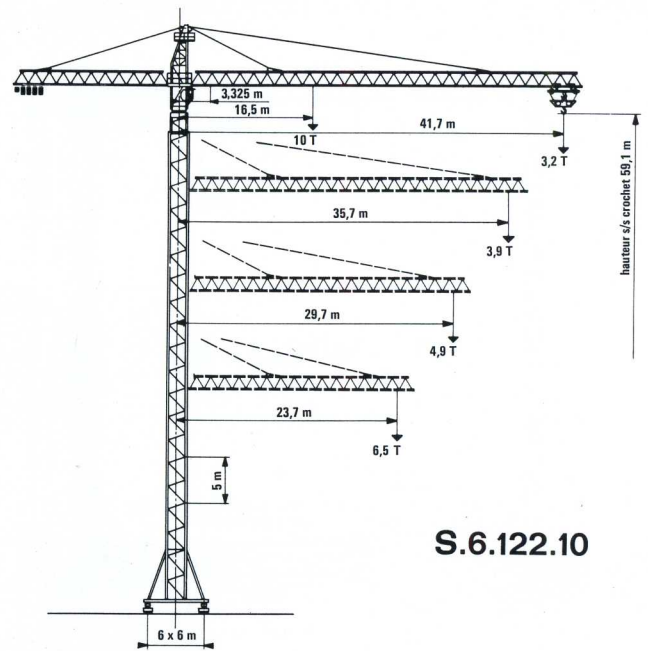
S.8.351.20



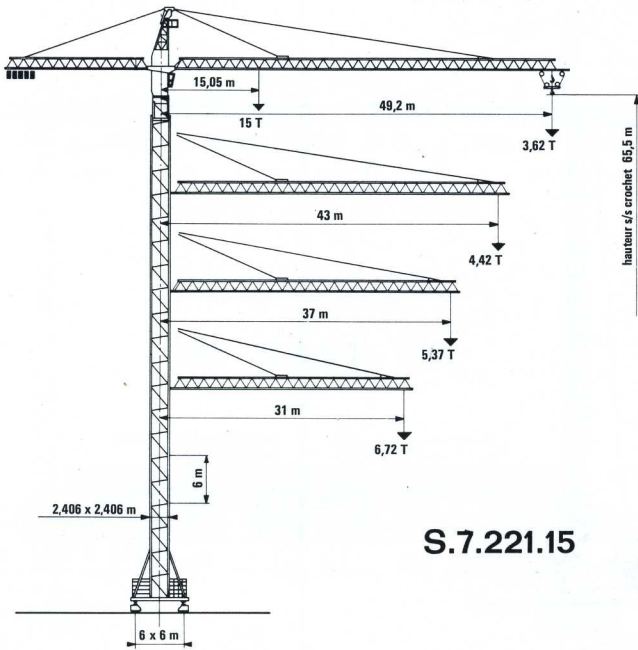
S.8.351.30



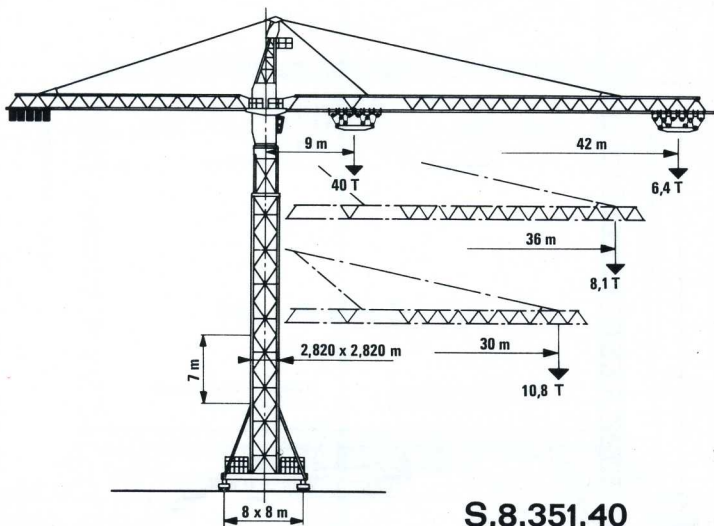
S.6.122.05



S.6.122.10



S.7.221.15



S.8.351.40

grues pingon



tichauer + cie
belley 01 | tél. 271
telex : 34.744 s.c.m.b. beley

KRIBAU

KRANE, INDUSTRIE UND
BAUMASCHINEN AG.
KASINOSTRASSE 29

5001 - AARAU

Tél. 064 24.52.77

Tx 68.357

la société se réserve le droit de modifier ou d'améliorer les dessins ou les fabrications des appareils tels que décrits ci-dessus et de les fournir, en cas de modifications, différents des illustrations ou spécifications de cette notice.