

Reich

Maschinen



**This is our
manufacturing-
program:**

**Top-modern
machinery and
plant for the
construction
industry.**

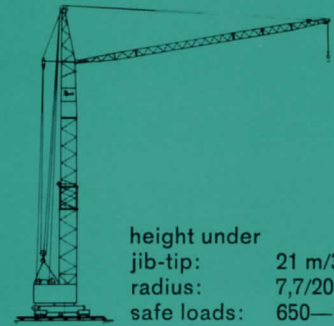
Reich Machinery and Plant

technically perfect and reliable.

We have been manufacturing building-machinery since many years and this means a lot of experience and know-how. This is why our products have such a high technical standard, and are so rugged, long-lived and dependable — all of them: Tower Cranes, Truckmixers, Concrete Pumps, Batching and Mixing Plants. They are designed and built for reliability and constant availability; this and superior quality — both materials and workmanship — account for economic, money-saving operation.

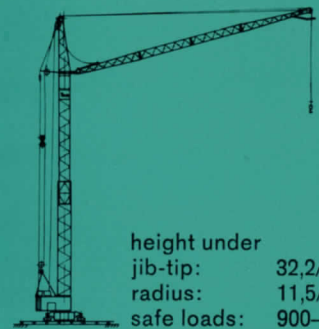
Tower Cranes A perfect range of cranes

N 12/14



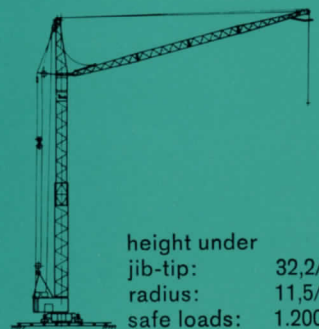
height under
jib-tip: 21 m/35,2 m
radius: 7,7/20 m
safe loads: 650—1.200 kg

N 33/40



height under
jib-tip: 32,2/52,3 m
radius: 11,5/30 m
safe loads: 900—2.150 kg

N 36/42



height under
jib-tip: 32,2/52,3 m
radius: 11,5/30 m
safe loads: 1.200—2.700 kg

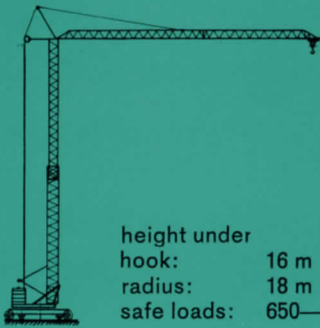
Reich

for any site, for heavy duty and for special jobs also

Heavy-duty Truckmixers

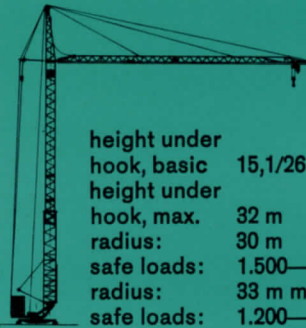
rated for 4, 6, 7 and 10 m³ of ready-mixed concrete.

L 13



height under hook: 16 m
radius: 18 m
safe loads: 650—1.300 kg

40 RS 60

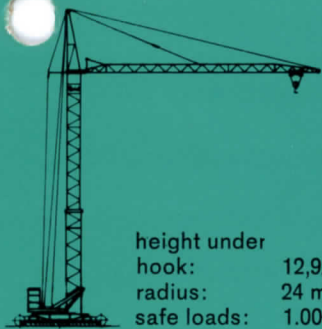


height under hook, basic 15,1/26 m
height under hook, max. 32 m
radius: 30 m
safe loads: 1.500—3.800 kg
radius: 33 m max.
safe loads: 1.200—3.800 kg

ATM 4

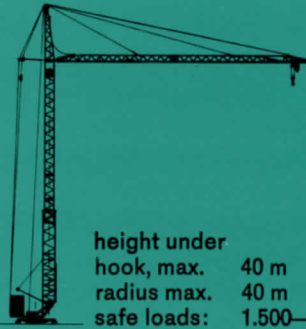


L 24/28



height under hook: 12,9/22,2 m
radius: 24 m
safe loads: 1.000—2.600 kg

50 RS 80

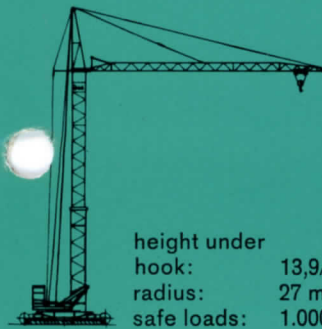


height under hook, max. 40 m
radius max. 40 m
safe loads: 1.500—6.000 kg

ATM 6
ATM 7



L 27/34



height under hook: 13,9/24,1 m
radius: 27 m
safe loads: 1.000—2.600 kg

Hydrostatic drive is standard equipment with all Reich-Truckmixers; it allows for varying drum-speeds with infinitely variable control. They may be powered either by a separate engine, or else be PTO-driven from the truck-engine.

Two versions are available:

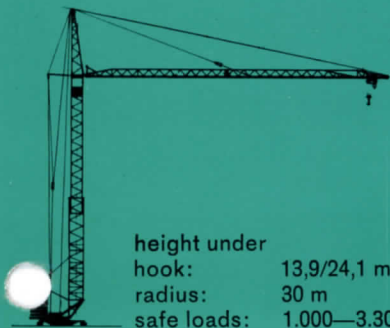
Reich ATM-Truckmixers — sturdy and reliable agitator-transitmixers of the conventional type.

Reich ITM-Truckmixers — High-Intensity-Transitmixers of novel design, with special mixing-tools, saving time and money by highspeed loading and discharge, rapid and intense mixing-action and reduced wear.

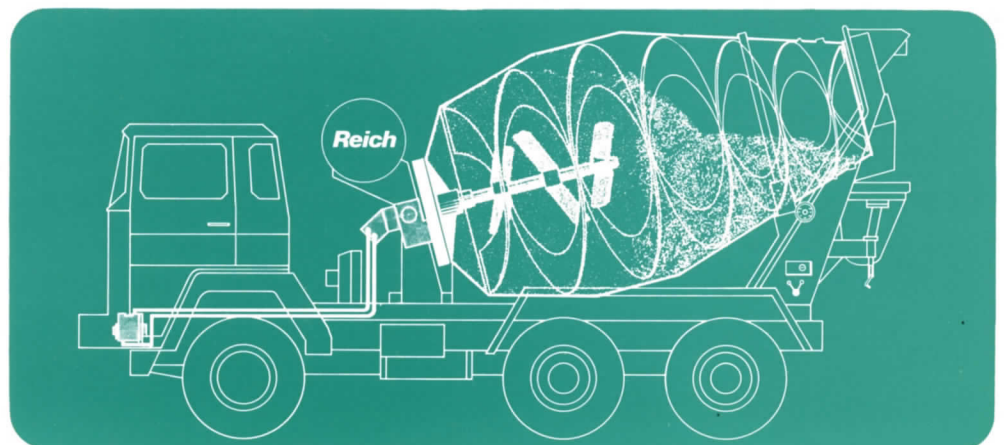
ATM 10



30 RS 30



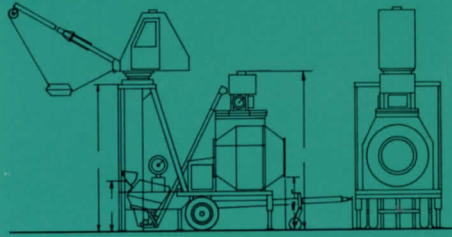
height under hook: 13,9/24,1 m
radius: 30 m
safe loads: 1.000—3.300 kg



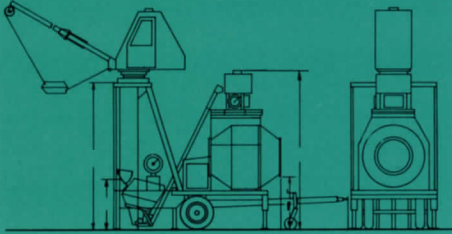
Reich UEK Batching and Mixing Plants

This is the up-to-date and economic equipment for the production of sitemixed concrete: A modular plant built around a semi-automatic, reversing drum concrete-mixer, with automated cement-weigher, weigh-batching of aggregates, the whole assembly being easy to transport as a mobile trailer unit. Three sizes are available: For 375 – 500 – 750 litres dry-in capacity.

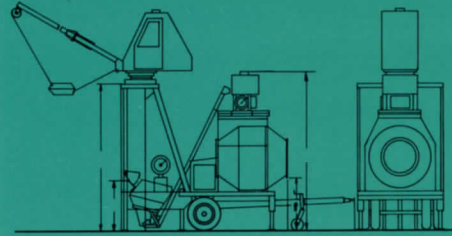
UEK 375/500



UEK 250/375

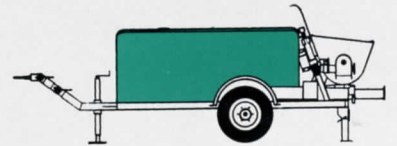


UEK 500/750

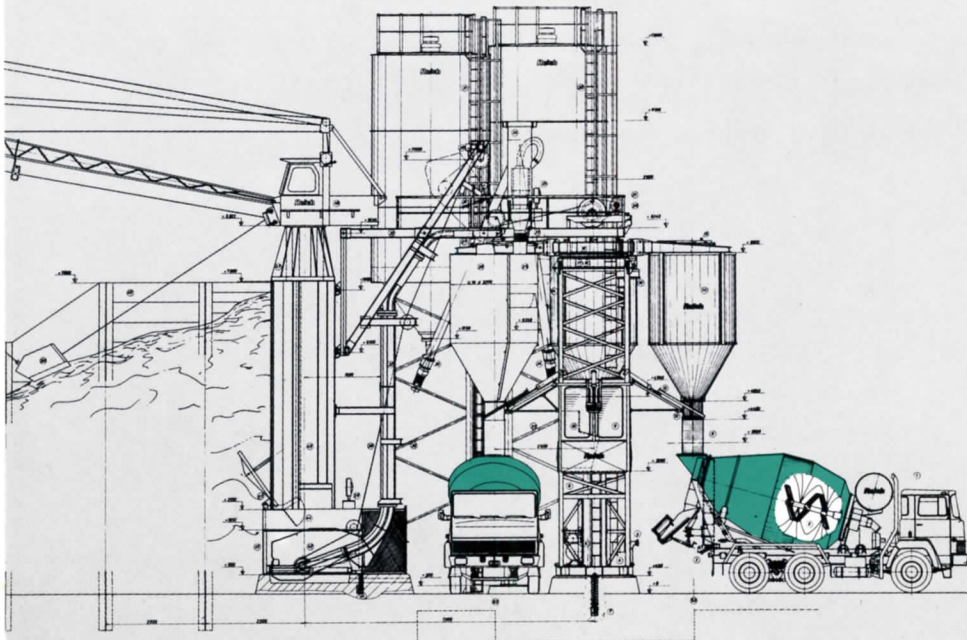


Reich BP Concrete Pumps

These are small and compact units technically unsophisticated and easy to operate, but nevertheless rated for high efficiency and top-performance – genuine heavy-duty pumps. Delivery is infinitely variable from 0–20 m³/h. Option of power: Either by electric motor or aircooled Diesel engine. A hydraulically operated remixer in the receiving-hopper provides for regular feeding and uninterrupted operation. These pumps are highly mobile, as they may be towed as one-axle trailers. They are particularly well suited for use in narrow or crowded sites.



REICH MASCHINEN GMBH.
P. O. Box 2044
Pfaffenweg 21
D-7910 Neu-Ulm/Germany
Phone: 07 31 / 7 90 77
Telex: 07-1 2844



Reich